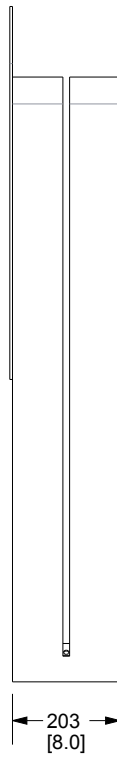
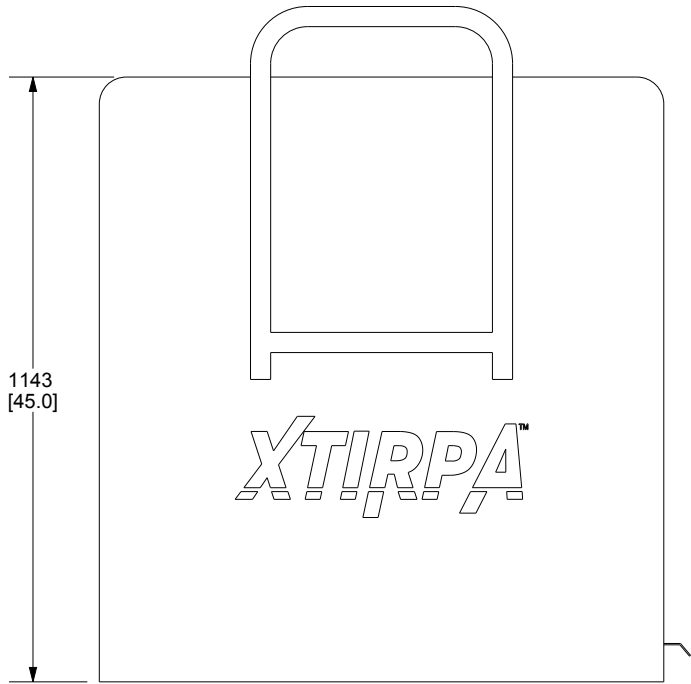
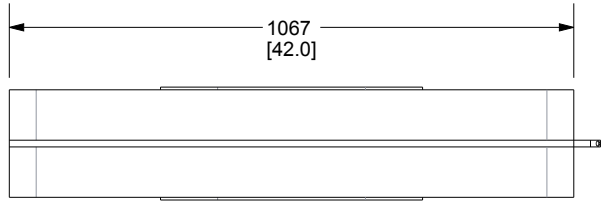
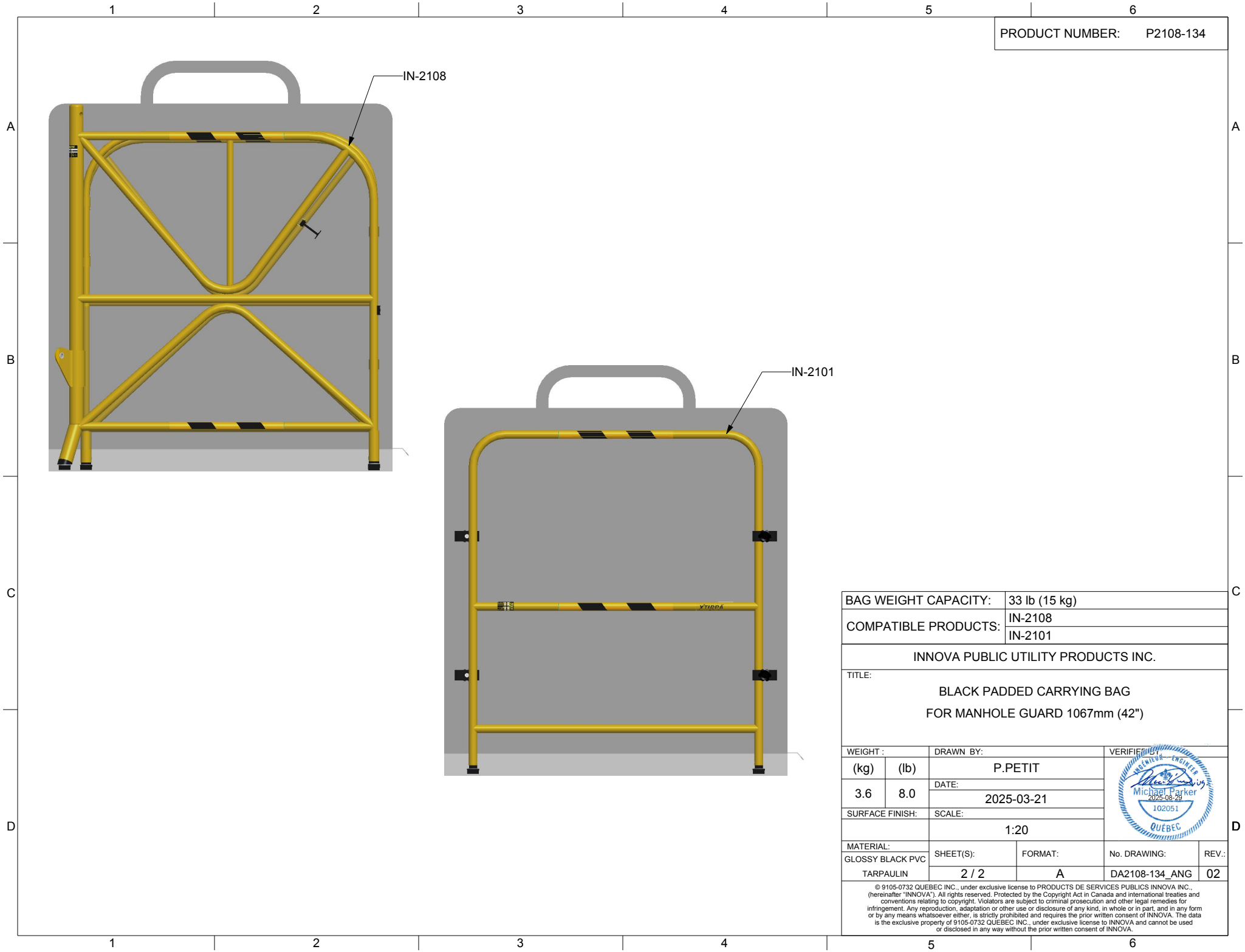


PRODUCT NUMBER: P2108-134



INNOVA PUBLIC UTILITY PRODUCTS INC.				
TITLE: BLACK PADDED CARRYING BAG FOR MANHOLE GUARD 1067mm (42")				
WEIGHT :		DRAWN BY:		VERIFIED BY:
(kg)	(lb)	P.PETIT		
3.6	8.0	DATE: 2025-03-21		
SURFACE FINISH:		SCALE: 7:100		
MATERIAL: GLOSSY BLACK PVC		SHEET(S): 1 / 2	FORMAT: A	No. DRAWING: DA2108-134_ANG 02
<small>© 9105-0732 QUEBEC INC., under exclusive license to PRODUCTS DE SERVICES PUBLICS INNOVA INC., (hereinafter "INNOVA"). All rights reserved. Protected by the Copyright Act in Canada and international treaties and conventions relating to copyright. Violators are subject to criminal prosecution and other legal remedies for infringement. Any reproduction, adaptation or other use or disclosure of any kind, in whole or in part, and in any form or by any means whatsoever either, is strictly prohibited and requires the prior written consent of INNOVA. The data is the exclusive property of 9105-0732 QUEBEC INC., under exclusive license to INNOVA and cannot be used or disclosed in any way without the prior written consent of INNOVA.</small>				



BAG WEIGHT CAPACITY:	33 lb (15 kg)
COMPATIBLE PRODUCTS:	IN-2108
	IN-2101

INNOVA PUBLIC UTILITY PRODUCTS INC.

TITLE:
**BLACK PADDED CARRYING BAG
 FOR MANHOLE GUARD 1067mm (42")**

WEIGHT :		DRAWN BY:		VERIFIED BY:	
(kg)	(lb)	P.PETIT			
3.6	8.0	DATE:			
		2025-03-21			
SURFACE FINISH:		SCALE:			
		1:20			
MATERIAL:		SHEET(S):	FORMAT:	No. DRAWING:	REV.:
GLOSSY BLACK PVC		2 / 2	A	DA2108-134_ANG	02
TARPAULIN					

© 9105-0732 QUEBEC INC., under exclusive license to PRODUCTS DE SERVICES PUBLICS INNOVA INC., (hereinafter "INNOVA"). All rights reserved. Protected by the Copyright Act in Canada and international treaties and conventions relating to copyright. Violators are subject to criminal prosecution and other legal remedies for infringement. Any reproduction, adaptation or other use or disclosure of any kind, in whole or in part, and in any form or by any means whatsoever either, is strictly prohibited and requires the prior written consent of INNOVA. The data is the exclusive property of 9105-0732 QUEBEC INC., under exclusive license to INNOVA and cannot be used or disclosed in any way without the prior written consent of INNOVA.