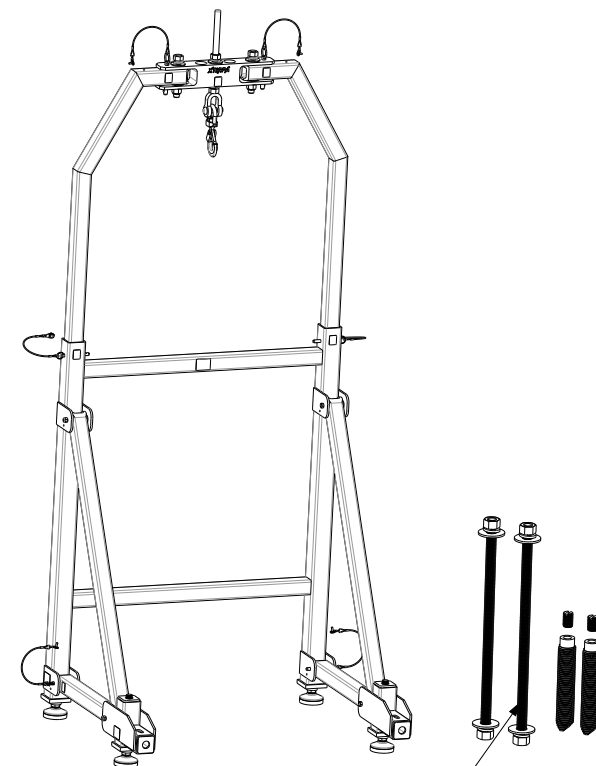
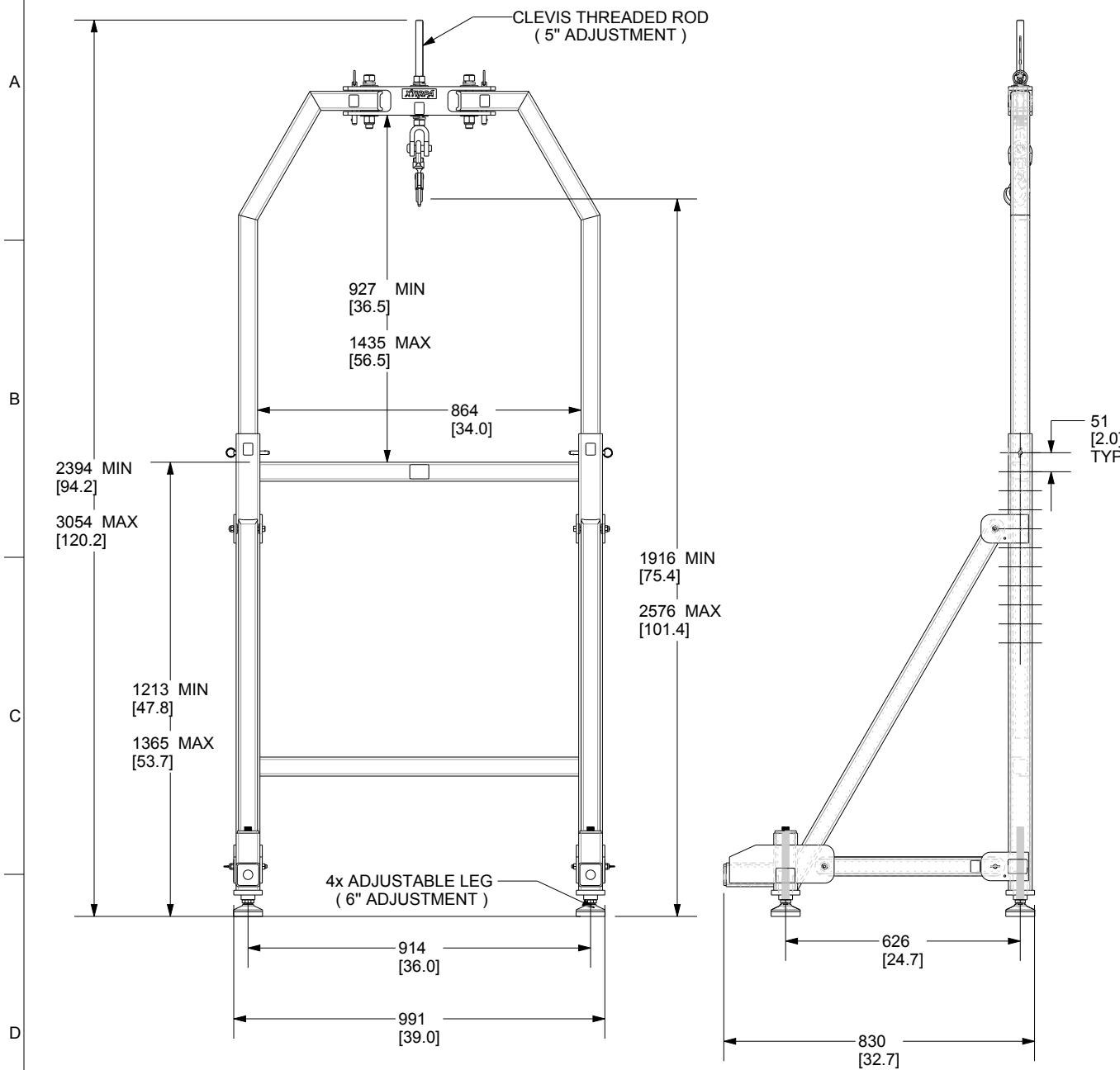



PRODUCT NUMBER: IN-2241



INNOVA PUBLIC UTILITY PRODUCTS INC.

TITLE:

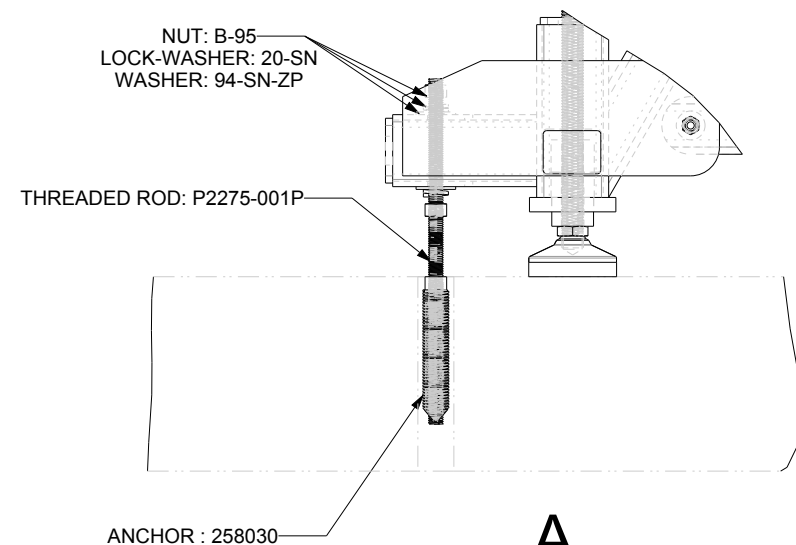
JIB ADAPTER FOR LATERAL ENTRY

WEIGHT :		DRAWN BY:		VERIFIED BY:	
(kg)	(lb)	P.Petit			
48.1	106.0	DATE:			
		05/10/2010			
		SCALE:			
		3:50			
MATERIAL:		SHEET(S):		FORMAT:	
ALUMINUM		1 / 5		A	
		No. DRAWING:		REV.:	
		DA2241-01 ANG			

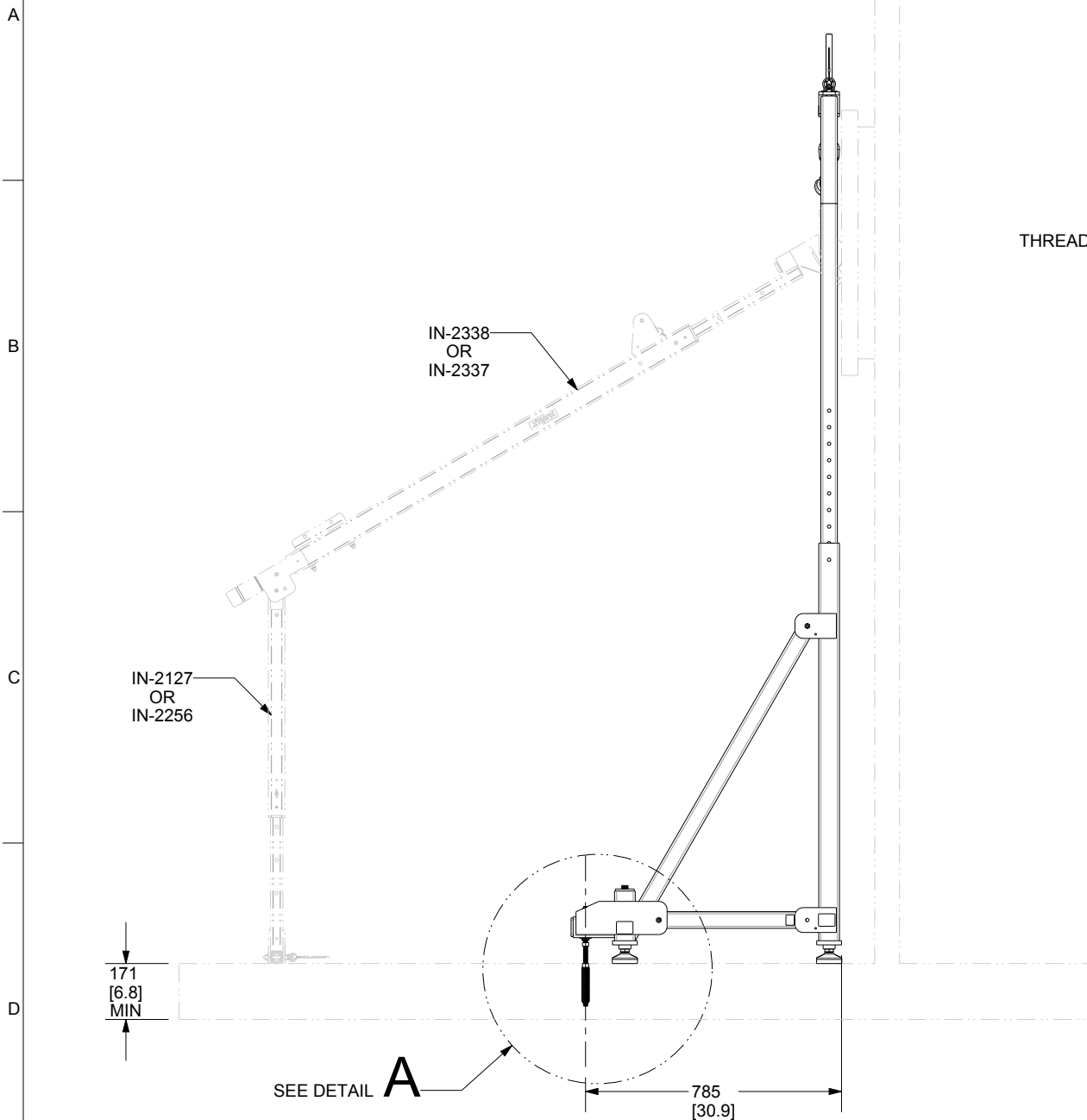
© 9105-0732 QUEBEC INC., under exclusive license to PRODUCTS DE SERVICES PUBLICS INNOVA INC., (hereinafter "INNOVA"). All rights reserved. Protected by the Copyright Act in Canada and international treaties and conventions relating to copyright. Violators are subject to criminal prosecution and other legal remedies for infringement. Any reproduction, adaptation or other use or disclosure of any kind, in whole or in part, and in any form or by any means whatsoever either, is strictly prohibited and requires the prior written consent of INNOVA. The data is the exclusive property of 9105-0732 QUEBEC INC., under exclusive license to INNOVA and cannot be used or disclosed in any way without the prior written consent of INNOVA.

PRODUCT NUMBER: IN-2241

TYPICAL INSTALLATION WITH ANCHOR KIT IN-2502




DETAIL **A**
SCALE 3:20



INNOVA PUBLIC UTILITY PRODUCTS INC.

TITLE:

JIB ADAPTER FOR LATERAL ENTRY

WEIGHT :		DRAWN BY:			
(kg)	(lb)	P.Petit			
48.1	106.0	DATE:			
		05/10/2010			
		SCALE:			
		1:50			
MATERIAL:					
ALUMINUM					
		SHEET(S):		FORMAT:	
		2 / 5		A	
				No. DRAWING:	
				DA2241-01 ANG	
				REV.:	

© 9105-0732 QUEBEC INC., under exclusive license to PRODUCTS DE SERVICES PUBLICS INNOVA INC., (hereinafter "INNOVA"). All rights reserved. Protected by the Copyright Act in Canada and international treaties and conventions relating to copyright. Violators are subject to criminal prosecution and other legal remedies for infringement. Any reproduction, adaptation or other use or disclosure of any kind, in whole or in part, and in any form or by any means whatsoever either, is strictly prohibited and requires the prior written consent of INNOVA. The data is the exclusive property of 9105-0732 QUEBEC INC., under exclusive license to INNOVA and cannot be used or disclosed in any way without the prior written consent of INNOVA.

SPECIFICATIONS

THIS EQUIPMENT IS CONSIDERED AS PART OF A PERSONAL FALL ARREST SYSTEM (PFAS).

IT IS ONLY TO BE USED IN CONJUNCTION WITH A PERSONAL FALL ARREST SYSTEM THAT LIMITS THE MAXIMUM ARREST FORCE (MAF) TO 8,0 kN.

WORKING LOAD LIMIT (WLL) :	164 kg (360 lb)
MINIMUM BREAKING STRENGTH :	16,0 kN (3 600 lbf)
MAXIMUM WORKING MOMENT :	0,678 kN•m (6 001 lbf•po)
MAXIMUM DESIGN MOMENT :	6,780 kN•m (60 001 lbf•po)

STANDARDS

NAME	CLASSIFICATION	YEAR	USERS
AS / NZS 5532	FREEFALL ARREST	2013	1
ANSI Z359.1	D	2017	1
CSA Z259.2.1	AD	2022	1
OSHA 1910.66			1
EN 795		2012	1
TS 16415	A		1

MATERIAL AND CONSTRUCTION

WELDING CERTIFICATION :

STEEL / STAINLESS STEEL
CSA W59.18 / CSA W47.1 / AWS D 1.6

STRUCTURE :

ALUMINUM 6061-T6

ADWARE :

STAINLESS STEEL

ALUMINIUM
CSA W59.2 / CSA W47.2

RESTRICTIONS

THIS EQUIPMENT SHOULD ONLY BE USED WITH PRODUCTS APPROVED BY INNOVA PUBLIC UTILITY PRODUCTS Inc.

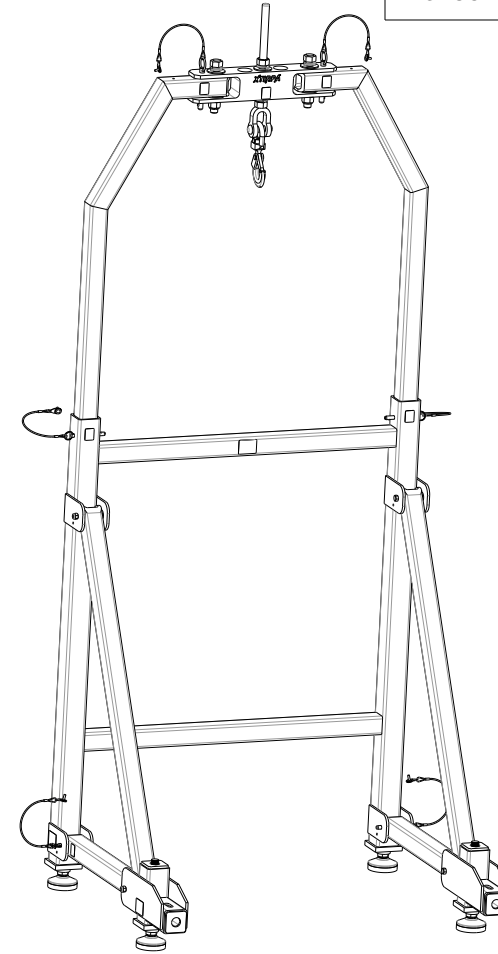
THIS EQUIPMENT SHOULD ALWAYS BE USED ON A SURFACE LEVEL

MAKE SURE ALL HARDWARE AND CONNECTION PINS ARE PROPERLY INSTALLED BEFORE USE.

THE LOAD MUST BE VERTICAL AND MAY HAVE A SLIGHT INCLINE OF UP TO 5 DEGREES.

IN CASE OF FALL OR EQUIPMENT SAFETY IF IN DOUBT, THE EQUIPMENT SHOULD BE REMOVED FROM THE EQUIPMENT IMMEDIATELY. SERVICED AND INSPECTED BY A QUALIFIED PERSON BEFORE REUSE.


PRODUCT NUMBER: IN-2241



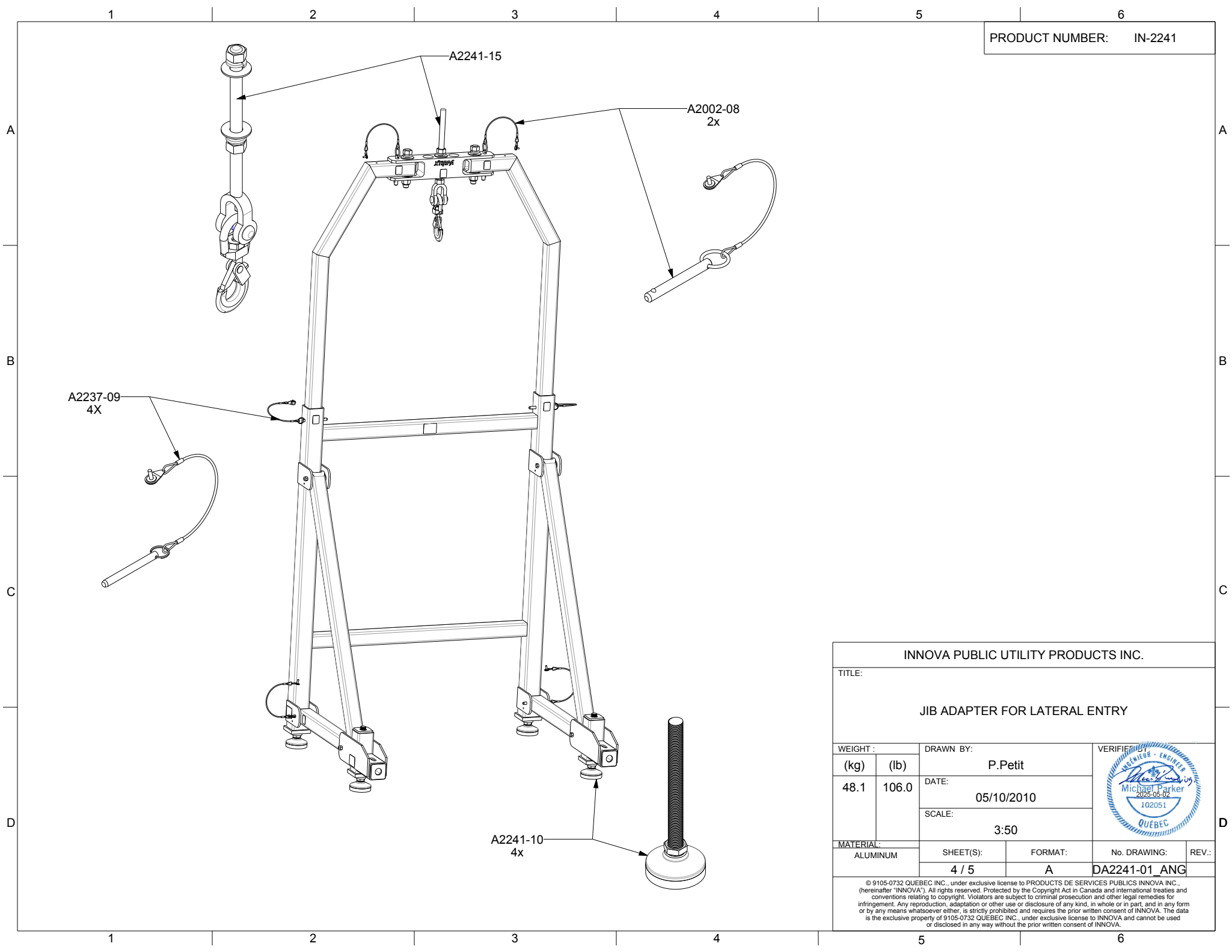
INNOVA PUBLIC UTILITY PRODUCTS INC.

TITLE:


JIB ADAPTER FOR LATERAL ENTRY

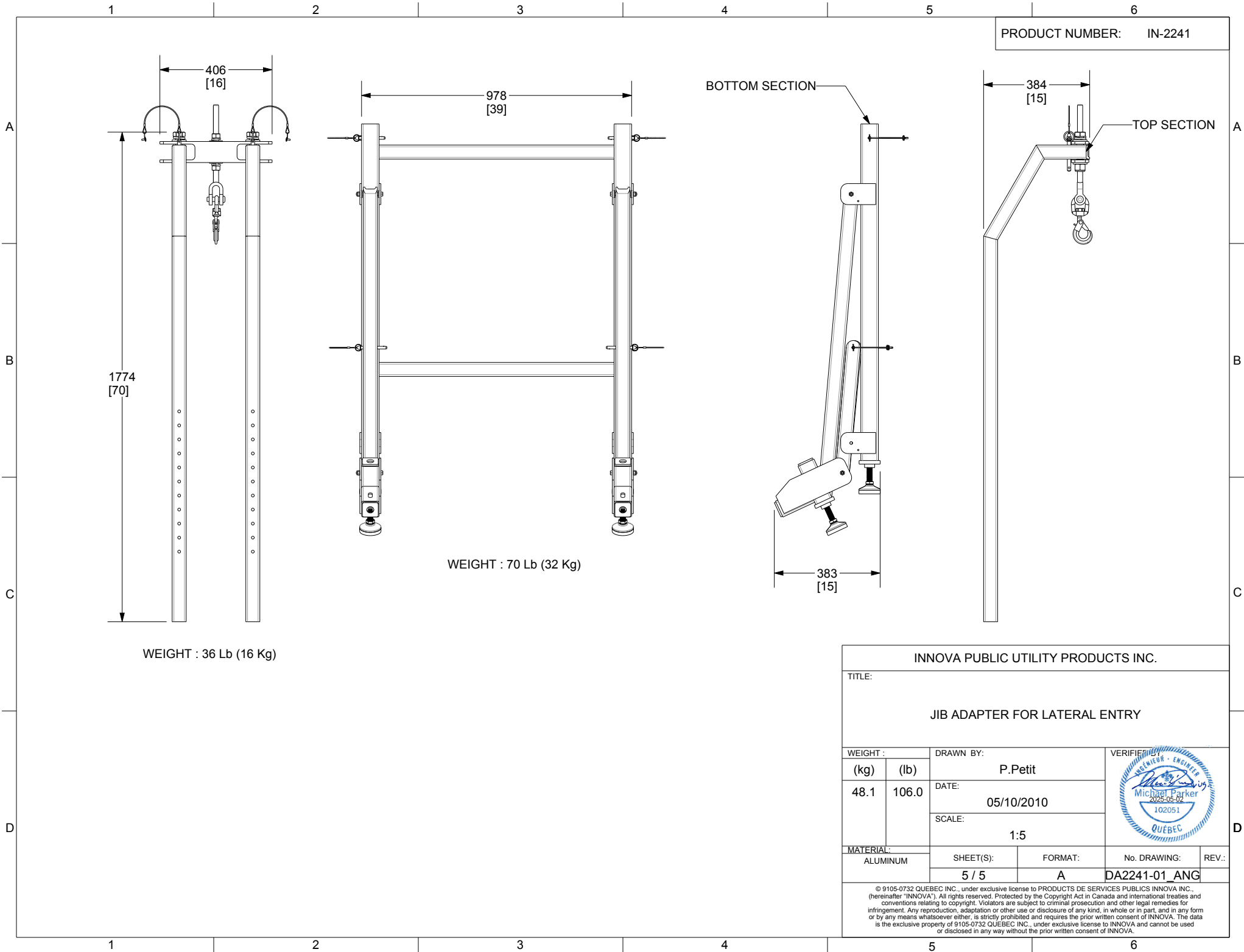
WEIGHT :		DRAWN BY:				
(kg)	(lb)	P.Petit				
48.1	106.0	DATE:	05/10/2010			
		SCALE:	1:50			
MATERIAL:		SHEET(S):		FORMAT:	No. DRAWING:	REV.:
ALUMINUM		3 / 5		A	DA2241-01 ANG	


© 9105-0732 QUEBEC INC., under exclusive license to PRODUCTS DE SERVICES PUBLICS INNOVA INC., (hereinafter "INNOVA"). All rights reserved. Protected by the Copyright Act in Canada and international treaties and conventions relating to copyright. Violators are subject to criminal prosecution and other legal remedies for infringement. Any reproduction, adaptation or other use or disclosure of any kind, in whole or in part, and in any form or by any means whatsoever either, is strictly prohibited and requires the prior written consent of INNOVA. The data is the exclusive property of 9105-0732 QUEBEC INC., under exclusive license to INNOVA and cannot be used or disclosed in any way without the prior written consent of INNOVA.



PRODUCT NUMBER: IN-2241

INNOVA PUBLIC UTILITY PRODUCTS INC.					
TITLE:					
JIB ADAPTER FOR LATERAL ENTRY					
WEIGHT :		DRAWN BY:		VERIFIED BY: 	
(kg)	(lb)	P.Petit			
48.1	106.0	DATE:			
		05/10/2010			
		SCALE:			
		3:50			
MATERIAL:		SHEET(S):	FORMAT:	No. DRAWING:	REV.:
ALUMINUM					
		4 / 5	A	DA2241-01_ANG	
© 9105-0732 QUEBEC INC., under exclusive license to PRODUCTS DE SERVICES PUBLICS INNOVA INC., (hereinafter "INNOVA"). All rights reserved. Protected by the Copyright Act in Canada and international treaties and conventions relating to copyright. Violators are subject to criminal prosecution and other legal remedies for infringement. Any reproduction, adaptation or other use or disclosure of any kind, in whole or in part, and in any form or by any means whatsoever either, is strictly prohibited and requires the prior written consent of INNOVA. The data is the exclusive property of 9105-0732 QUEBEC INC., under exclusive license to INNOVA and cannot be used or disclosed in any way without the prior written consent of INNOVA.					



INNOVA PUBLIC UTILITY PRODUCTS INC.				
TITLE:				
JIB ADAPTER FOR LATERAL ENTRY				
WEIGHT :		DRAWN BY: P.Petit	VERIFIED BY: 	
(kg)	(lb)			
48.1	106.0	DATE: 05/10/2010		
		SCALE: 1:5		
MATERIAL:				
ALUMINUM		SHEET(S): 5 / 5	FORMAT: A	No. DRAWING: DA2241-01_ANG
				REV.:
<p>© 9105-0732 QUEBEC INC., under exclusive license to PRODUCTS DE SERVICES PUBLICS INNOVA INC., (hereinafter "INNOVA"). All rights reserved. Protected by the Copyright Act in Canada and international treaties and conventions relating to copyright. Violators are subject to criminal prosecution and other legal remedies for infringement. Any reproduction, adaptation or other use or disclosure of any kind, in whole or in part, and in any form or by any means whatsoever either, is strictly prohibited and requires the prior written consent of INNOVA. The data is the exclusive property of 9105-0732 QUEBEC INC., under exclusive license to INNOVA and cannot be used or disclosed in any way without the prior written consent of INNOVA.</p>				