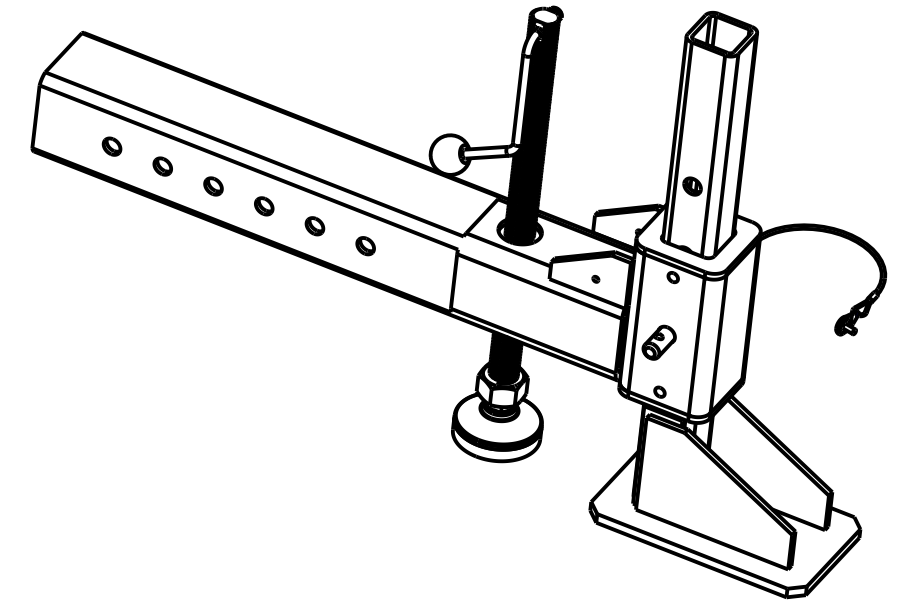
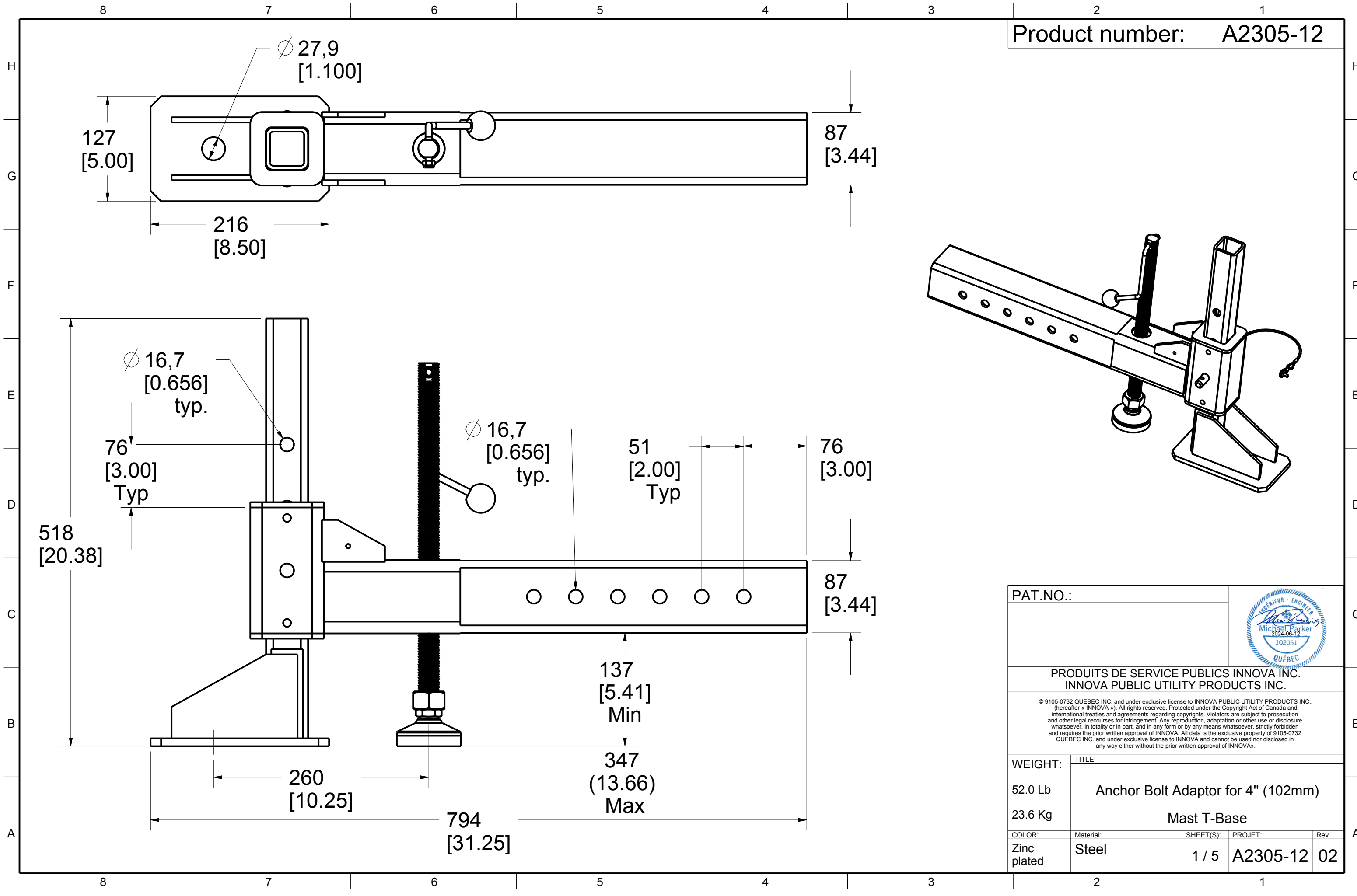



Product number: A2305-12

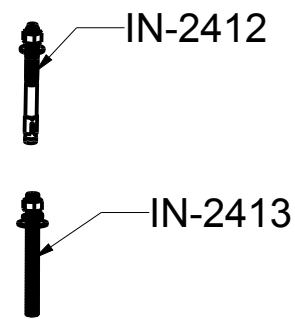
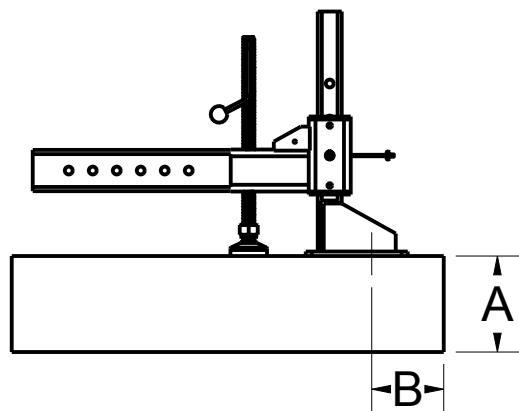


PAT.NO.:				
<b>PRODUITS DE SERVICE PUBLICS INNOVA INC.</b> <b>INNOVA PUBLIC UTILITY PRODUCTS INC.</b>				
<small>© 9105-0732 QUEBEC INC. and under exclusive license to INNOVA PUBLIC UTILITY PRODUCTS INC., (hereafter « INNOVA »). All rights reserved. Protected under the Copyright Act of Canada and international treaties and agreements regarding copyrights. Violators are subject to prosecution and other legal recourses for infringement. Any reproduction, adaptation or other use or disclosure whatsoever, in totality or in part, and in any form or by any means whatsoever, strictly forbidden and requires the prior written approval of INNOVA. All data is the exclusive property of 9105-0732 QUEBEC INC. and under exclusive license to INNOVA and cannot be used nor disclosed in any way either without the prior written approval of INNOVA.</small>				
WEIGHT:	TITLE:			
52.0 Lb	Anchor Bolt Adaptor for 4" (102mm)			
23.6 Kg	Mast T-Base			
COLOR:	Material:	SHEET(S):	PROJET:	Rev.
Zinc plated	Steel	1 / 5	A2305-12	02

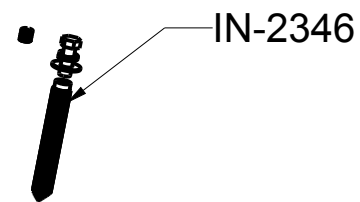
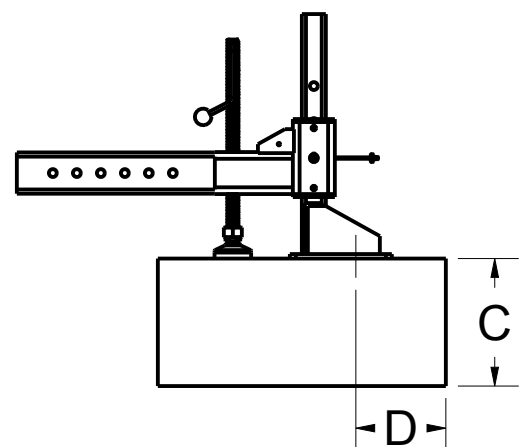
# Anchor Bolt Adapter Installation Requirements

Product number: **A2305-12**

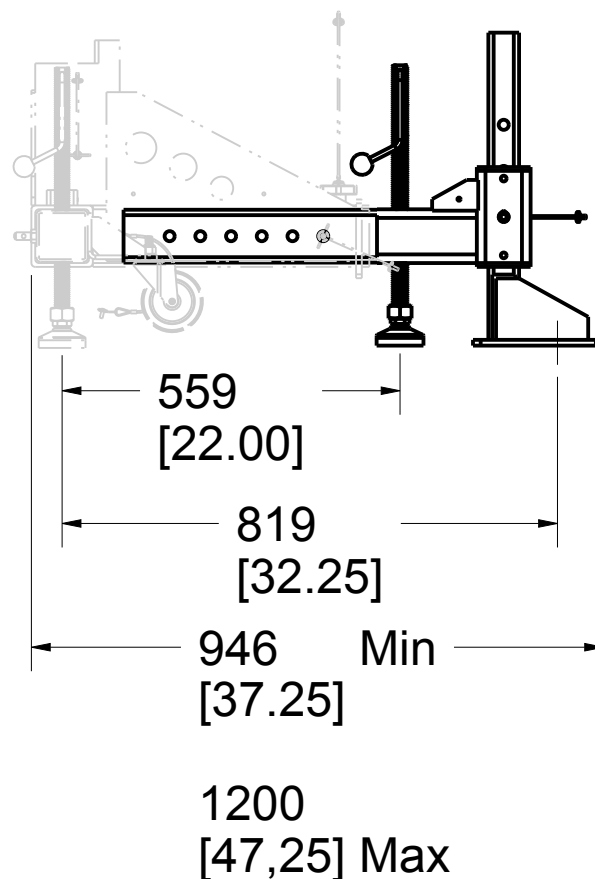
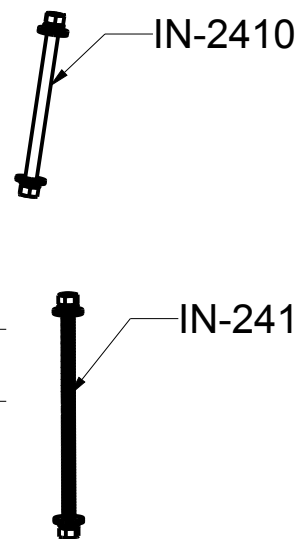
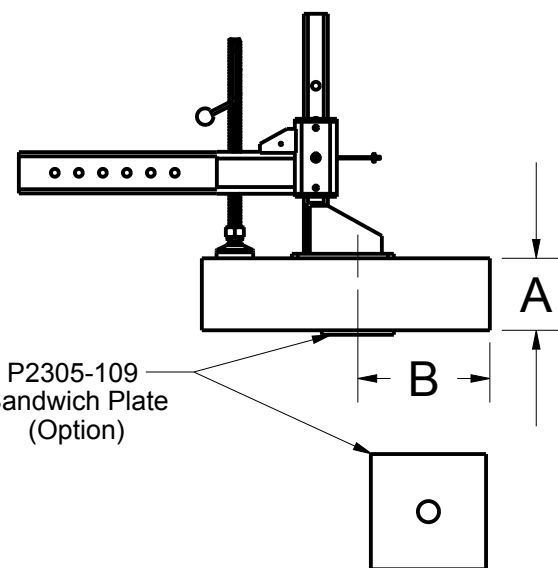
## Full Thickness Installation Mechanical Ancorage or Chemical



## Full Thickness Installation Chemical Ancorage with Sleeve



## Sandwich Installation Type



## ANSI, AS / NZS, CSA, OSHA

	Full thickness	Example *	Sandwich	Example *
Minimum thickness	Refer to fastener manufacturer specifications	(A) 203 mm (8.0") (C) 270 mm (10.6")	To be determined by the local engineer	(A) 152 mm (6.0")
Minimum edge distance	Refer to fastener manufacturer specifications	(B) 152 mm (6.0") (D) 191 mm (7.5")	To be determined by the local engineer	(B) 279 mm (11.0")
Embedment depth	Refer to fastener manufacturer specifications	(A) 152 mm (6.0") (C) 203 mm (8.0")	N / A	N / A
Minimum pullout strength per fastener	23,8 kN (5 360 lbf)	23,8 kN (5 360 lbf)	23,8 kN (5 360 lbf)	23,8 kN (5 360 lbf)
Maximum moment applied to the structure	19,5 kN•m (172 860 lbf•in)	19,5 kN•m (172 860 lbf•in)	19,5 kN•m (172 860 lbf•in)	19,5 kN•m (172 860 lbf•in)
Maximum vertical load applied to the structure	22,3 kN (5 000 lbf)	22,3 kN (5 000 lbf)	22,3 kN (5 000 lbf)	22,3 kN (5 000 lbf)

### Note:

1. It is the responsibility of the local engineer to assure installation compliance.
2. To be installed with 3/4" (M20) minimum  $\varnothing$  stainless steel anchors. Smaller anchors must be validated by the local engineer.
3. All other variation must be approved by the local engineer.
4. \*Typical installation concrete for 21 MPa (3000 psi) and 0.2% gross area rebar reinforcement.

PAT.NO.:



PRODUITS DE SERVICE PUBLICS INNOVA INC.  
INNOVA PUBLIC UTILITY PRODUCTS INC.

© 9105-0732 QUEBEC INC. and under exclusive license to INNOVA PUBLIC UTILITY PRODUCTS INC. (hereafter « INNOVA »). All rights reserved. Protected under the Copyright Act of Canada and international treaties and agreements regarding copyrights. Violators are subject to prosecution and other legal recourses for infringement. Any reproduction, adaptation or other use or disclosure whatsoever, in totality or in part, and in any form or by any means whatsoever, strictly forbidden and requires the prior written approval of INNOVA. All data is the exclusive property of 9105-0732 QUEBEC INC. and under exclusive license to INNOVA and cannot be used nor disclosed in any way either without the prior written approval of INNOVA.

WEIGHT:

52.0 Lb  
23.6 Kg

TITLE:

Anchor Bolt Adaptor for 4" (102mm)  
Mast T-Base

COLOR:

Zinc plated

Material:

Steel

SHEET(S):

2 / 5

PROJET:

A2305-12

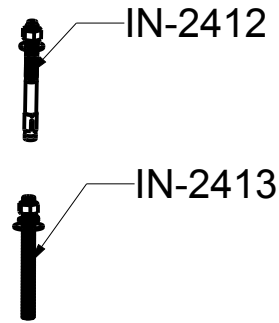
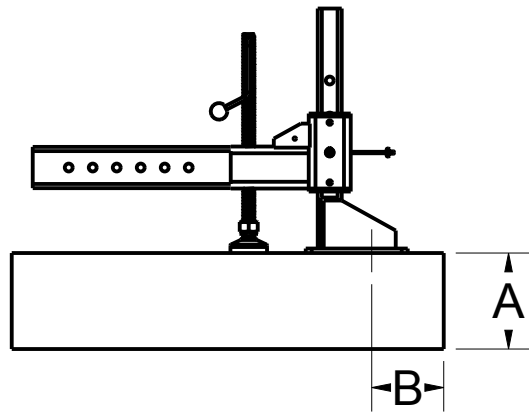
Rev.

02

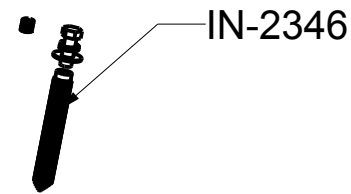
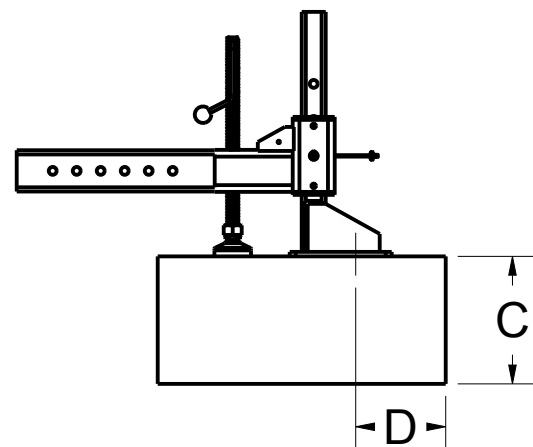
# Anchor Bolt Adapter Installation Requirements

Product number: **A2305-12**

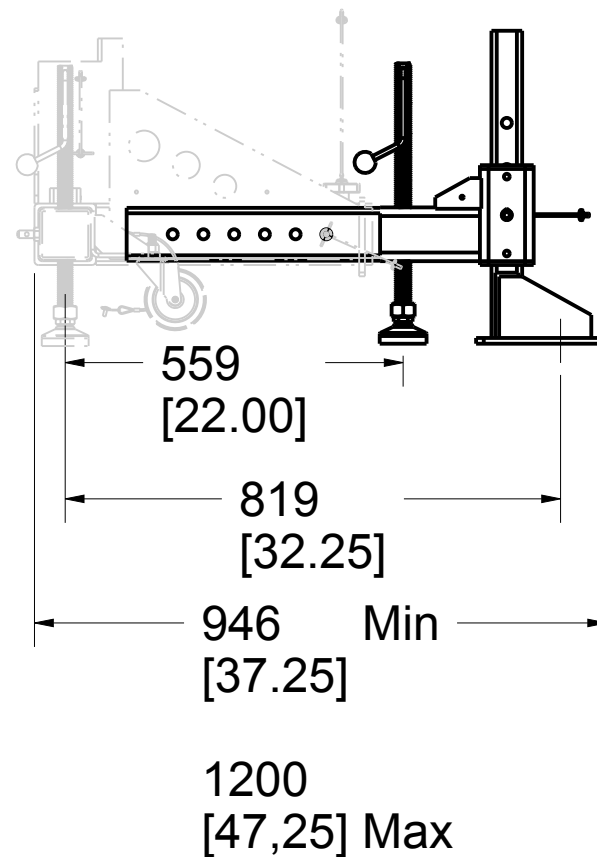
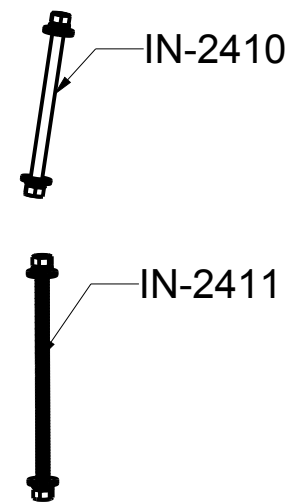
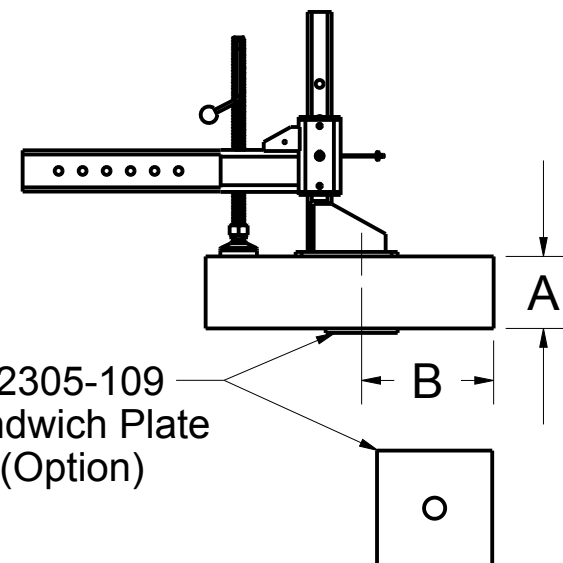
Full Thickness Installation  
Mechanical Anchorage or Chemical



Full Thickness Installation  
Chemical Anchorage with Sleeve



Sandwich Installation Type

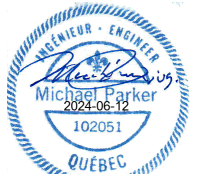


EN 795, TS16415

	Full thickness	Sandwich
Minimum thickness (A) and (C)	Refer to fastener manufacturer specifications	To be determined by the local engineer
Minimum edge distance (B) and (D)	Refer to fastener manufacturer specifications	To be determined by the local engineer
Embedment depth	Refer to fastener manufacturer specifications	To be determined by the local engineer
Minimum pullout strength per fastener	21 kN (4 721 lbf)	21 kN (4 721 lbf)
Maximum moment applied to the structure	17,2 kN•m (152 233 lbf•in)	17,2 kN•m (152 233 lbf•in)
Maximum vertical load applied to the structure	13,0 kN (2 923 lbf)	13,0 kN (2 923 lbf)

Note:  
 1. It is the responsibility of the local engineer to assure installation compliance.  
 2. To be installed with 3/4" (M20) minimum  $\phi$  stainless steel anchors. Smaller anchors must be validated by the local engineer.  
 3. All other variation must be approved by the local engineer.

PAT.NO.:



PRODUITS DE SERVICE PUBLICS INNOVA INC.  
INNOVA PUBLIC UTILITY PRODUCTS INC.

© 9105-0732 QUEBEC INC. and under exclusive license to INNOVA PUBLIC UTILITY PRODUCTS INC. (hereafter « INNOVA »). All rights reserved. Protected under the Copyright Act of Canada and international treaties and agreements regarding copyrights. Violators are subject to prosecution and other legal recourses for infringement. Any reproduction, adaptation or other use or disclosure whatsoever, in totality or in part, and in any form or by any means whatsoever, strictly forbidden and requires the prior written approval of INNOVA. All data is the exclusive property of 9105-0732 QUEBEC INC. and under exclusive license to INNOVA and cannot be used nor disclosed in any way either without the prior written approval of INNOVA.

WEIGHT:

TITLE:

52.0 Lb  
23.6 Kg

Anchor Bolt Adaptor for 4" (102mm)  
Mast T-Base

COLOR:	Material:	SHEET(S):	PROJET:	Rev.
Zinc plated	Steel	3 / 5	A2305-12	02

**SPECIFICATIONS**

This equipment is considered as part of a personal fall arrest system (PFAS).  
 It is only to be used in conjunction with a personal fall arrest system that limits the maximum arrest force (MAF) to 6,0 kN.

Working load limit (WLL) :	244 kg	(536 lb)
Minimum breaking strength :	23,8 kN	(5 360 lbf)
Maximum working moment :	1,95 kN•m	(17 286 lbf•in)
Maximum design moment :	19,5 kN•m	(172 860 lbf•in)

**STANDARDS**

Name	Classification	Year	Users
ANSI Z359.1	D	2017	1
CSA Z259.2.1	AD	2007	1
OSHA 1910.140			1
OSHA 1926.502			1
EN 795	A	2012	1
TS 16415		2013	3

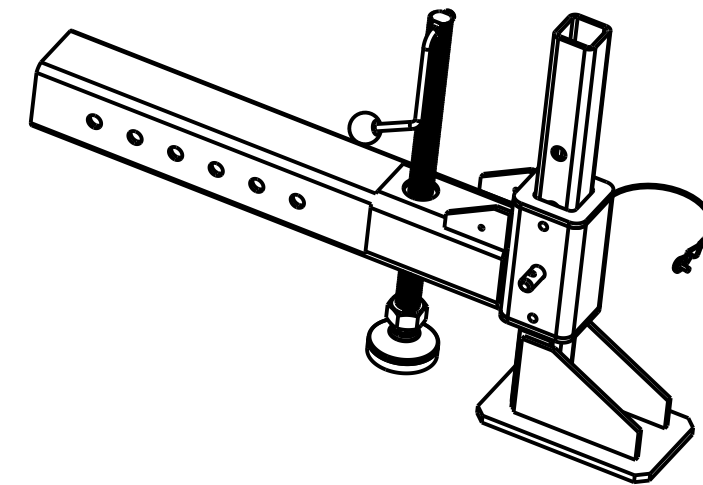
**MATERIAL AND CONSTRUCTION**

Structure : Steel  
 Hardware : Stainless Steel  
 Welding certification : Steel / Stainless Steel : CSA W59.18 / CSA W47.1 and AWS D1.6

**RESTRICTIONS**

This equipment is to be used only with products approved by Innova Public Utility Products Inc.  
 This equipment must always be operated on a level surface.  
 Ensure that all hardwares and connecting pins are properly installed before use.  
 In the occurrence of a fall or that the safety of the equipment is in doubt, the equipment must be immediately removed from service and inspected by qualified personnel before reuse.

Product number: **A2305-12**



PAT.NO.:				
PRODUITS DE SERVICE PUBLICS INNOVA INC. INNOVA PUBLIC UTILITY PRODUCTS INC.				
<small>© 9105-0732 QUEBEC INC. and under exclusive license to INNOVA PUBLIC UTILITY PRODUCTS INC., (hereafter « INNOVA »). All rights reserved. Protected under the Copyright Act of Canada and international treaties and agreements regarding copyrights. Violators are subject to prosecution and other legal recourses for infringement. Any reproduction, adaptation or other use or disclosure whatsoever, in totality or in part, and in any form or by any means whatsoever, strictly forbidden and requires the prior written approval of INNOVA. All data is the exclusive property of 9105-0732 QUEBEC INC. and under exclusive license to INNOVA and cannot be used nor disclosed in any way either without the prior written approval of INNOVA».</small>				
WEIGHT:	TITLE:			
52.0 Lb	Anchor Bolt Adaptor for 4" (102mm)			
23.6 Kg	Mast T-Base			
COLOR:	Material:	SHEET(S):	PROJET:	Rev.
Zinc plated	Steel	4 / 5	A2305-12	02

8

7

6

5

4

3

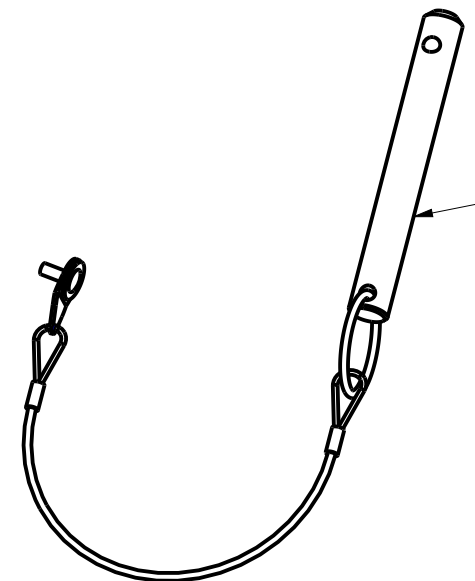
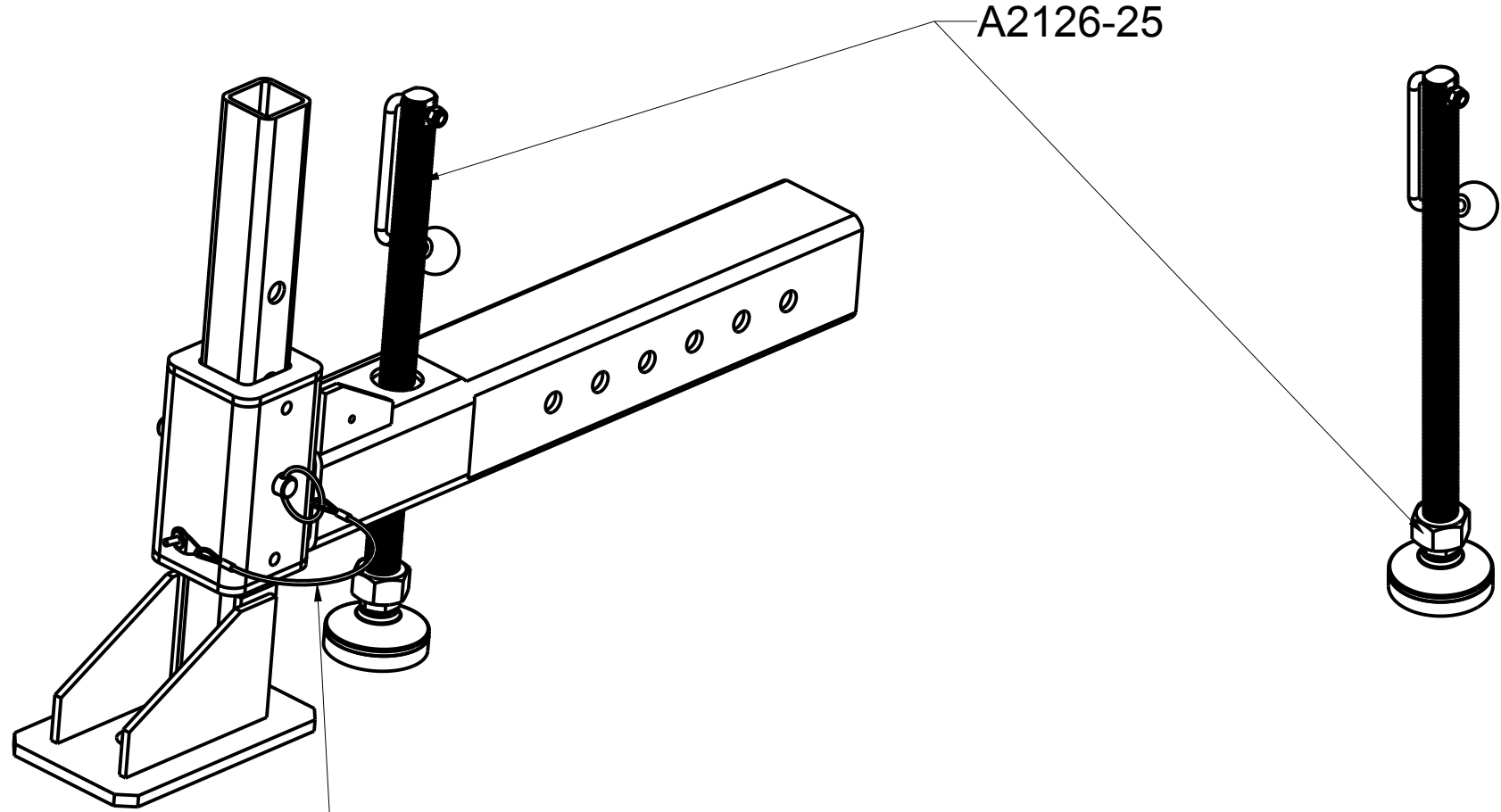
2

1

Product number: A2305-12

H  
G  
F  
E  
D  
C  
B  
A

H  
G  
F  
E  
D  
C  
B  
A



PAT.NO.:				
<b>PRODUITS DE SERVICE PUBLICS INNOVA INC.</b> <b>INNOVA PUBLIC UTILITY PRODUCTS INC.</b>				
© 9105-0732 QUEBEC INC. and under exclusive license to INNOVA PUBLIC UTILITY PRODUCTS INC., (hereafter « INNOVA »). All rights reserved. Protected under the Copyright Act of Canada and international treaties and agreements regarding copyrights. Violators are subject to prosecution and other legal recourses for infringement. Any reproduction, adaptation or other use or disclosure whatsoever, in totality or in part, and in any form or by any means whatsoever, strictly forbidden and requires the prior written approval of INNOVA. All data is the exclusive property of 9105-0732 QUEBEC INC. and under exclusive license to INNOVA and cannot be used nor disclosed in any way either without the prior written approval of INNOVA®.				
WEIGHT:	TITLE:			
52.0 Lb	<b>Anchor Bolt Adaptor for 4" (102mm)</b> <b>Mast T-Base</b>			
23.6 Kg				
COLOR:	Material:	SHEET(S):	PROJET:	Rev.
Zinc plated	Steel	5 / 5	A2305-12	02

8

7

6

5

4

3

2

1