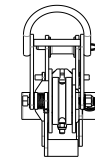
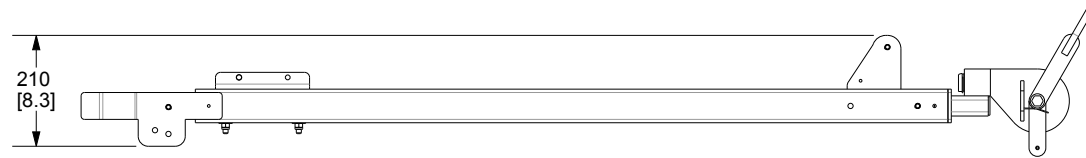
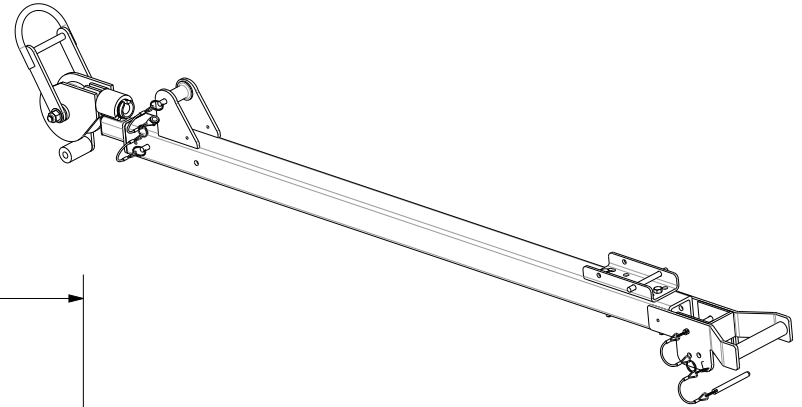
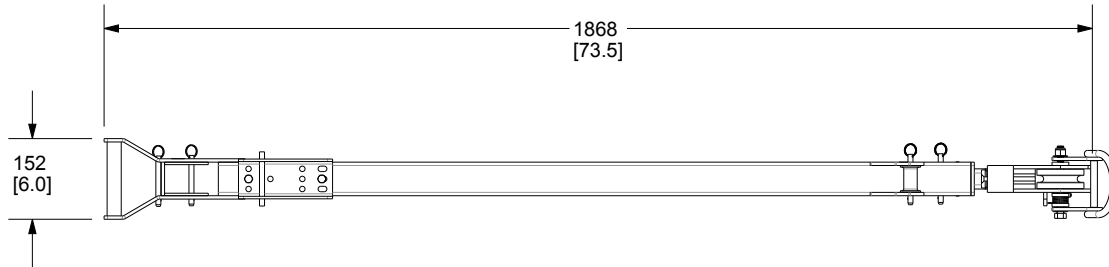


PRODUCT NUMBER: IN-2338



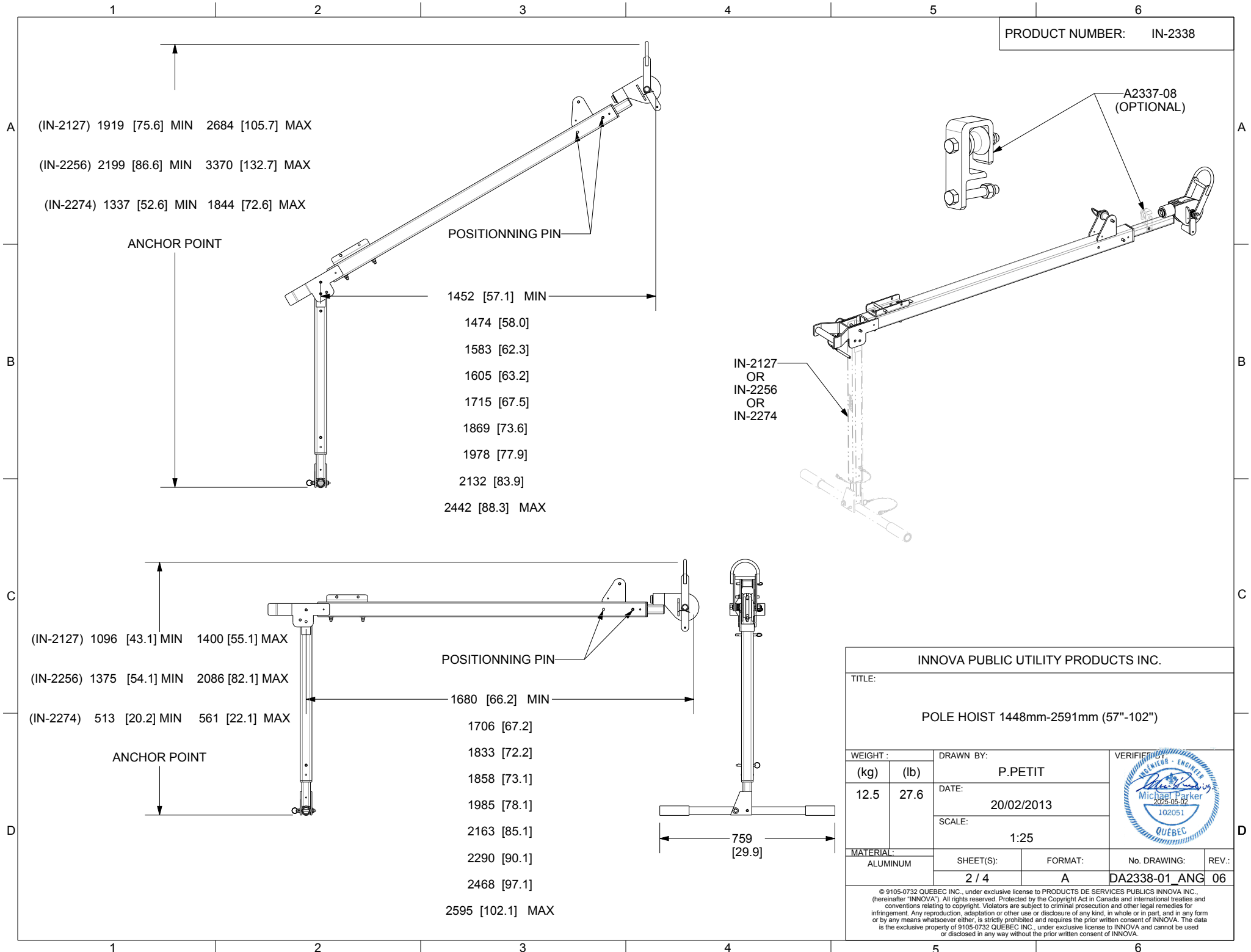
INNOVA PUBLIC UTILITY PRODUCTS INC.

TITLE:

POLE HOIST 1448mm-2591mm (57"-102")

WEIGHT :		DRAWN BY:		
(kg)	(lb)	P.PETIT		
12.5	27.6	DATE: 20/02/2013		
		SCALE:		
		7:100		
MATERIAL:		SHEET(S):	FORMAT:	No. DRAWING:
ALUMINUM		1 / 4	A	DA2338-01 ANG 06
		REV.:		

© 9105-0732 QUEBEC INC., under exclusive license to PRODUCTS DE SERVICES PUBLICS INNOVA INC., (hereinafter "INNOVA"). All rights reserved. Protected by the Copyright Act in Canada and international treaties and conventions relating to copyright. Violators are subject to criminal prosecution and other legal remedies for infringement. Any reproduction, adaptation or other use or disclosure of any kind, in whole or in part, and in any form or by any means whatsoever either, is strictly prohibited and requires the prior written consent of INNOVA. The data is the exclusive property of 9105-0732 QUEBEC INC., under exclusive license to INNOVA and cannot be used or disclosed in any way without the prior written consent of INNOVA.



(IN-2127) 1919 [75.6] MIN 2684 [105.7] MAX
 (IN-2256) 2199 [86.6] MIN 3370 [132.7] MAX
 (IN-2274) 1337 [52.6] MIN 1844 [72.6] MAX

ANCHOR POINT

POSITIONNING PIN

1452 [57.1] MIN
 1474 [58.0]
 1583 [62.3]
 1605 [63.2]
 1715 [67.5]
 1869 [73.6]
 1978 [77.9]
 2132 [83.9]
 2442 [88.3] MAX

IN-2127
 OR
 IN-2256
 OR
 IN-2274

A2337-08
 (OPTIONAL)

(IN-2127) 1096 [43.1] MIN 1400 [55.1] MAX
 (IN-2256) 1375 [54.1] MIN 2086 [82.1] MAX
 (IN-2274) 513 [20.2] MIN 561 [22.1] MAX

ANCHOR POINT

POSITIONNING PIN

1680 [66.2] MIN
 1706 [67.2]
 1833 [72.2]
 1858 [73.1]
 1985 [78.1]
 2163 [85.1]
 2290 [90.1]
 2468 [97.1]
 2595 [102.1] MAX

759
 [29.9]

INNOVA PUBLIC UTILITY PRODUCTS INC.				
TITLE:				
POLE HOIST 1448mm-2591mm (57"-102")				
WEIGHT :		DRAWN BY:		
(kg)	(lb)	P.PETIT		
12.5	27.6	DATE: 20/02/2013		
		SCALE:		
		1:25		
MATERIAL:		SHEET(S):	FORMAT:	No. DRAWING:
ALUMINUM		2 / 4	A	DA2338-01 ANG 06
<small>© 9105-0732 QUEBEC INC., under exclusive license to PRODUCTS DE SERVICES PUBLICS INNOVA INC., (hereinafter "INNOVA"). All rights reserved. Protected by the Copyright Act in Canada and international treaties and conventions relating to copyright. Violators are subject to criminal prosecution and other legal remedies for infringement. Any reproduction, adaptation or other use or disclosure of any kind, in whole or in part, and in any form or by any means whatsoever either, is strictly prohibited and requires the prior written consent of INNOVA. The data is the exclusive property of 9105-0732 QUEBEC INC., under exclusive license to INNOVA and cannot be used or disclosed in any way without the prior written consent of INNOVA.</small>				

SPECIFICATIONS

THIS EQUIPMENT IS CONSIDERED AS PART OF A PERSONAL FALL ARREST SYSTEM (PFAS).
 IT IS ONLY TO BE USED IN CONJUNCTION WITH A PERSONAL FALL ARREST SYSTEM THAT LIMITS THE MAXIMUM ARREST FORCE (MAF) TO 8,0 kN.

WORKING LOAD LIMIT (WLL) : 164 kg (360 lb)
 MINIMUM BREAKING STRENGTH FOR ANCHORAGE 1 (F1) : 16,0 kN (3 600 lbf)

STANDARDS

NAME	CLASSIFICATION	YEAR	USERS
ANSI Z359.1		1992 (R1999)	1
CSA Z259.1		1998 (R2011)	1
OSHA 1910.66			1
EN 795	A	2012	1

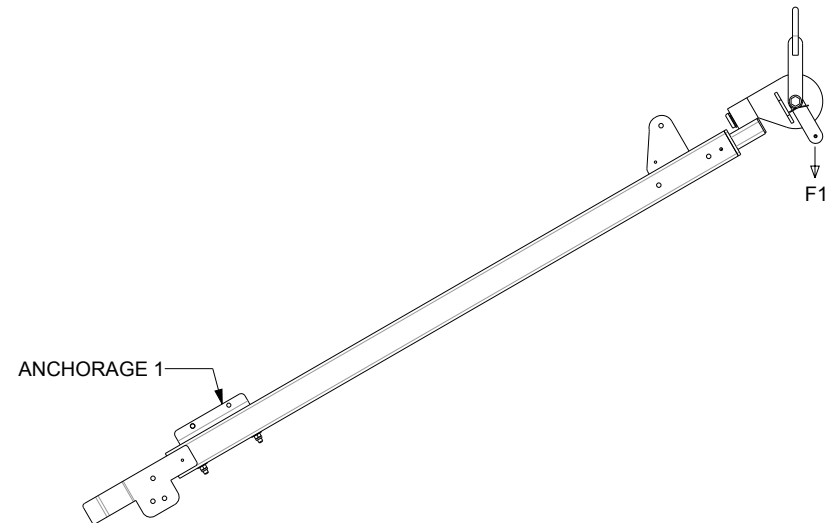
MATERIAL AND CONSTRUCTION

WELDING CERTIFICATION :	STRUCTURE :	HARDWARE :
STEEL / STAINLESS STEEL CSA W59.18 / CSA W47.1 / AWS D 1.6	ALUMINUM 6061-T6	STAINLESS STEEL
ALUMINIUM CSA W59.2 / CSA W47.2		

RESTRICTIONS

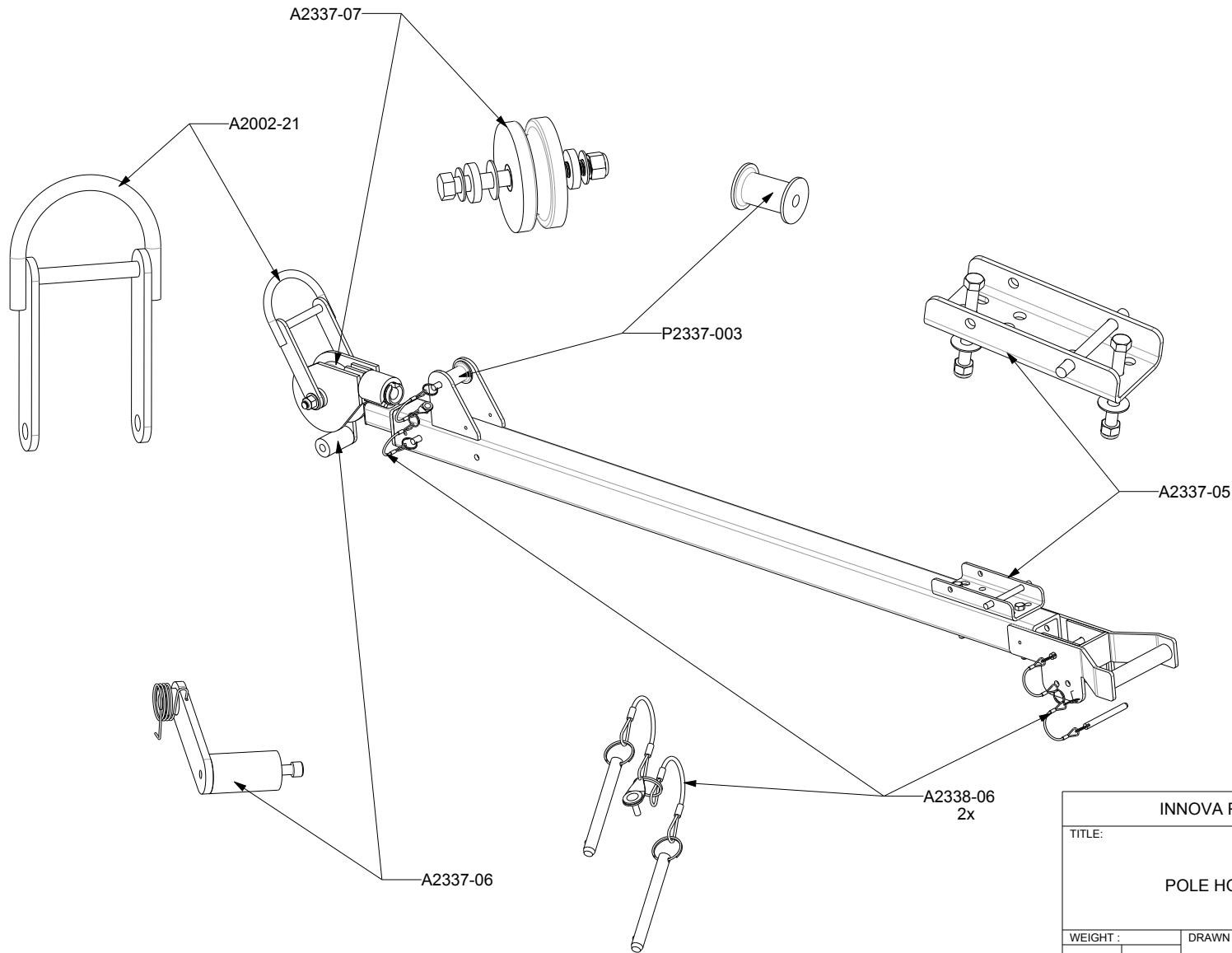
THIS EQUIPMENT SHOULD ONLY BE USED WITH PRODUCTS APPROVED BY INNOVA PUBLIC UTILITY PRODUCTS Inc.
 THIS EQUIPMENT SHOULD ALWAYS BE USED ON A SURFACE LEVEL
 MAKE SURE ALL HARDWARE AND CONNECTION PINS ARE PROPERLY INSTALLED BEFORE USE.
 IN CASE OF FALL OR EQUIPMENT SAFETY IF IN DOUBT, THE EQUIPMENT SHOULD BE REMOVED FROM THE EQUIPMENT IMMEDIATELY. SERVICED AND INSPECTED BY A QUALIFIED PERSON BEFORE REUSE.

PRODUCT NUMBER: IN-2338



ALSO AVAILABLE CLEAR ANODIZED

INNOVA PUBLIC UTILITY PRODUCTS INC.					
TITLE: POLE HOIST 1448mm-2591mm (57"-102")					
WEIGHT :		DRAWN BY:		VERIFIED BY:	
(kg)	(lb)	P.PETIT			
12.5	27.6	DATE: 20/02/2013			
		SCALE: 3:50			
MATERIAL:		SHEET(S):	FORMAT:	No. DRAWING:	REV.:
ALUMINUM		3 / 4	A	DA2338-01 ANG	06
<small>© 9105-0732 QUEBEC INC., under exclusive license to PRODUCTS DE SERVICES PUBLICS INNOVA INC., (hereinafter "INNOVA"). All rights reserved. Protected by the Copyright Act in Canada and international treaties and conventions relating to copyright. Violators are subject to criminal prosecution and other legal remedies for infringement. Any reproduction, adaptation or other use or disclosure of any kind, in whole or in part, and in any form or by any means whatsoever either, is strictly prohibited and requires the prior written consent of INNOVA. The data is the exclusive property of 9105-0732 QUEBEC INC., under exclusive license to INNOVA and cannot be used or disclosed in any way without the prior written consent of INNOVA.</small>					



INNOVA PUBLIC UTILITY PRODUCTS INC.				
TITLE:				
POLE HOIST 1448mm-2591mm (57"-102")				
WEIGHT :		DRAWN BY:		
(kg)	(lb)	P.PETIT		
12.5	27.6	DATE:		
		20/02/2013		
		SCALE:		
		1:10		
MATERIAL:				
ALUMINUM		SHEET(S):	FORMAT:	No. DRAWING:
		4 / 4	A	DA2338-01 ANG 06
<small>© 9105-0732 QUEBEC INC., under exclusive license to PRODUCTS DE SERVICES PUBLICS INNOVA INC., (hereinafter "INNOVA"). All rights reserved. Protected by the Copyright Act in Canada and international treaties and conventions relating to copyright. Violators are subject to criminal prosecution and other legal remedies for infringement. Any reproduction, adaptation or other use or disclosure of any kind, in whole or in part, and in any form or by any means whatsoever either, is strictly prohibited and requires the prior written consent of INNOVA. The data is the exclusive property of 9105-0732 QUEBEC INC., under exclusive license to INNOVA and cannot be used or disclosed in any way without the prior written consent of INNOVA.</small>				