

PAT. NO.:		©19/06/2013	©
PRODUITS DE SERVICE PUBLICS INNOVA INC. INNOVA PUBLIC UTILITY PRODUCTS INC.			
© 9105-0732 QUEBEC INC. and under exclusive license to INNOVA PUBLIC UTILITY PRODUCTS INC., (hereafter « INNOVA »). All rights reserved. Protected under the Copyright Act of Canada and international treaties and agreements regarding copyrights. Violators are subject to prosecution and other legal recourses for infringement. Any reproduction, adaptation or other use or disclosure whatsoever, in totality or in part, and in any form or by any means whatsoever, strictly forbidden and requires the prior written approval of INNOVA. All data is the exclusive property of 9105-0732 QUEBEC INC. and under exclusive license to INNOVA and cannot be used nor disclosed in any way either without the prior written approval of INNOVA.			
WEIGHT:	TITLE:		
18 Lb	Universal wall adapter		
8 Kg	for hitch mount		
COLOR:	MATERIAL:	SHEET(S):	PROJECT:
Zinc plated	Steel	1 / 4	IN-2348

Typical Installations

Recommandations:

Concrete must be made of 0,2% gross area rebar reinforced 13.8 MPa (2,000 psi) or better.
Minimum thickness of 203mm (8").

Moment capacity:

3,169 N-m (28,050 lbf-in)

Shear load: 9,786 N (2,200 lbf)

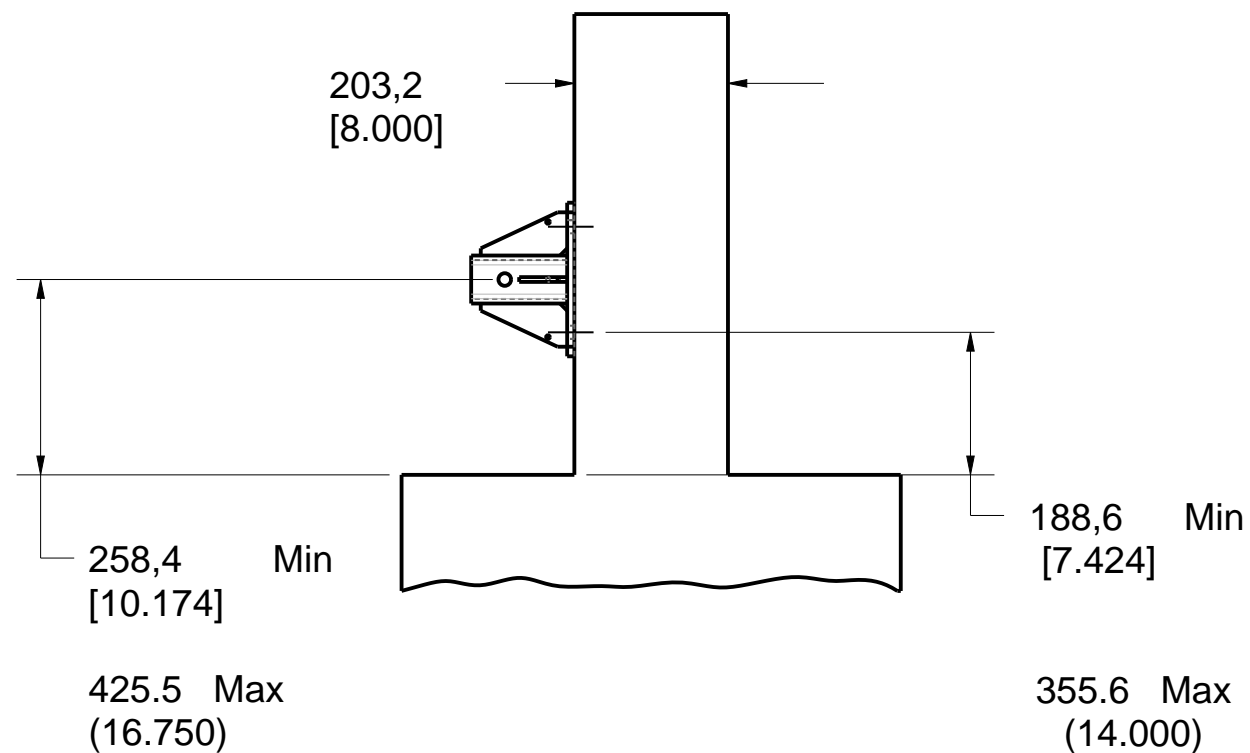
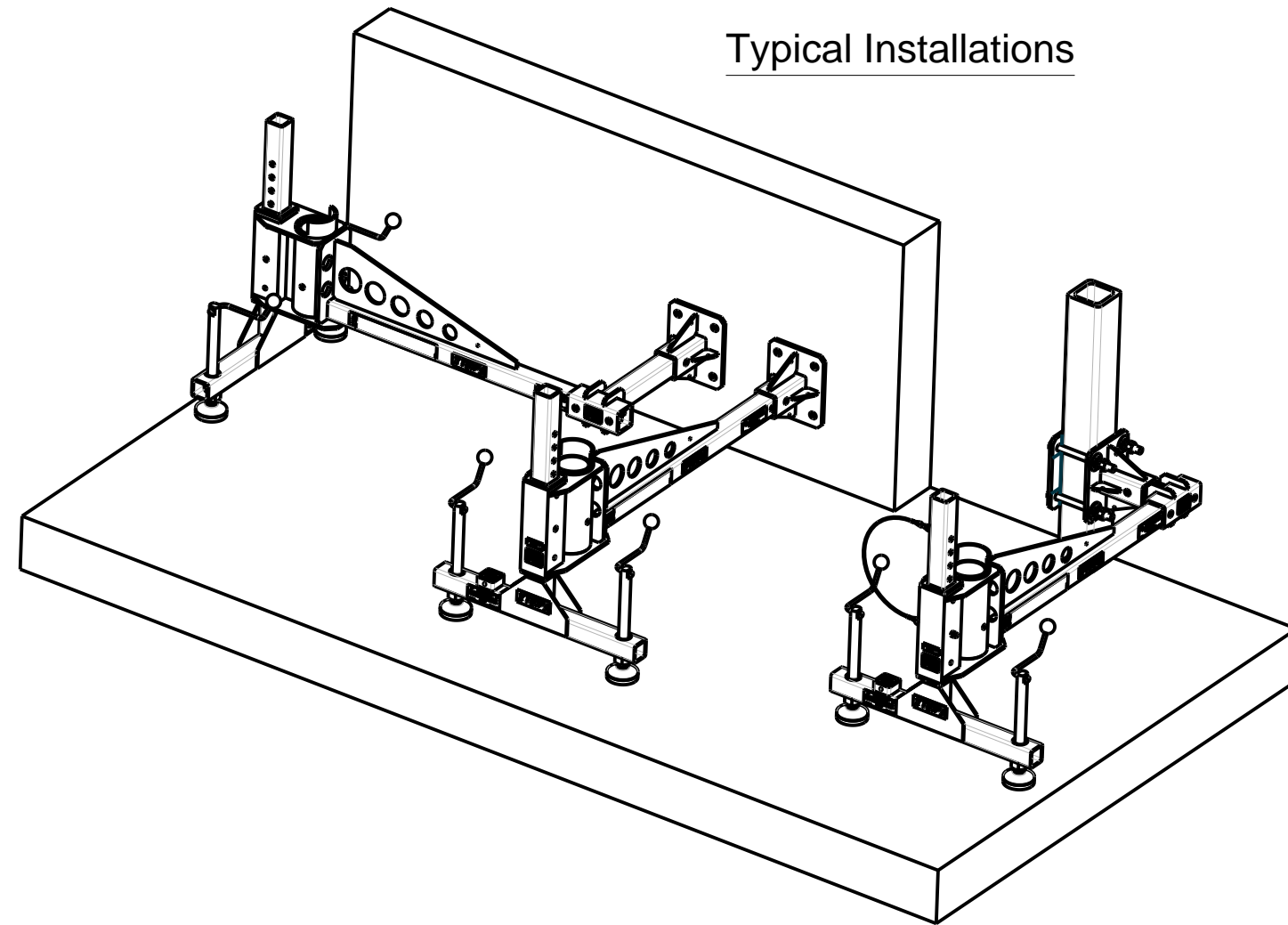
N.B. It is the responsibility of the field Engineer to assure installation compliance.

Hardware:

Anchor bolts: Chemical setting 5/8" x 5-5/8" effective holding length and made of 304/316 stainless steel.

Max pulling strength: 35,586 N (8,000 lbf)

To be installed with 5/8" stainless steel Nuts and washers.



PAT. NO.:		©19/06/2013	©
PRODUITS DE SERVICE PUBLICS INNOVA INC. INNOVA PUBLIC UTILITY PRODUCTS INC.			
© 9105-0732 QUEBEC INC. and under exclusive license to INNOVA PUBLIC UTILITY PRODUCTS INC., (hereafter « INNOVA »). All rights reserved. Protected under the Copyright Act of Canada and international treaties and agreements regarding copyrights. Violators are subject to prosecution and other legal recourses for infringement. Any reproduction, adaptation or other use or disclosure whatsoever, in totality or in part, and in any form or by any means whatsoever, strictly forbidden and requires the prior written approval of INNOVA. All data is the exclusive property of 9105-0732 QUEBEC INC. and under exclusive license to INNOVA and cannot be used nor disclosed in any way either without the prior written approval of INNOVA.			
WEIGHT:	TITLE:		
18 Lb	Universal wall adapter		
8 Kg	for hitch mount		
COLOR:	MATERIAL:	SHEET(S):	PROJECT:
Zinc plated	Steel	2 / 4	IN-2348

SPECIFICATIONS

This equipment is considered as part of a personal fall arrest system (PFAS)

It is only to be used in conjunction with a personal fall arrest system that limits the maximum arrest force (MAF).

Maximum working moment: 317 N-m (2,805 lbf-in)
 Maximum design moment : 3,170 N-m (28,050 lbf-in).

STANDARDS

Meets the following standards:

- OSHA Personal fall arrest system - 1910.66 App C
- ANSI Safety requirements for personal fall arrest system, subsystems and components Z359.1 (R1999) / 2007
- CAN/CSA Fall arresters, vertical lifelines, and rails Z259.2.1-98
- CE EN 795: 2012 Type B

MATERIAL AND CONSTRUCTION

- Plate, gussets : 44W Steel
- Tube: HSS (A500-C) Steel
- Pin : Steel zinc plated
- Lanyard : Nylon covered Stainless Steel Cable
- Welding Certification : CSA W59 & W47.1, AWS D1.6
- Finish : Zinc plated

RESTRICTIONS

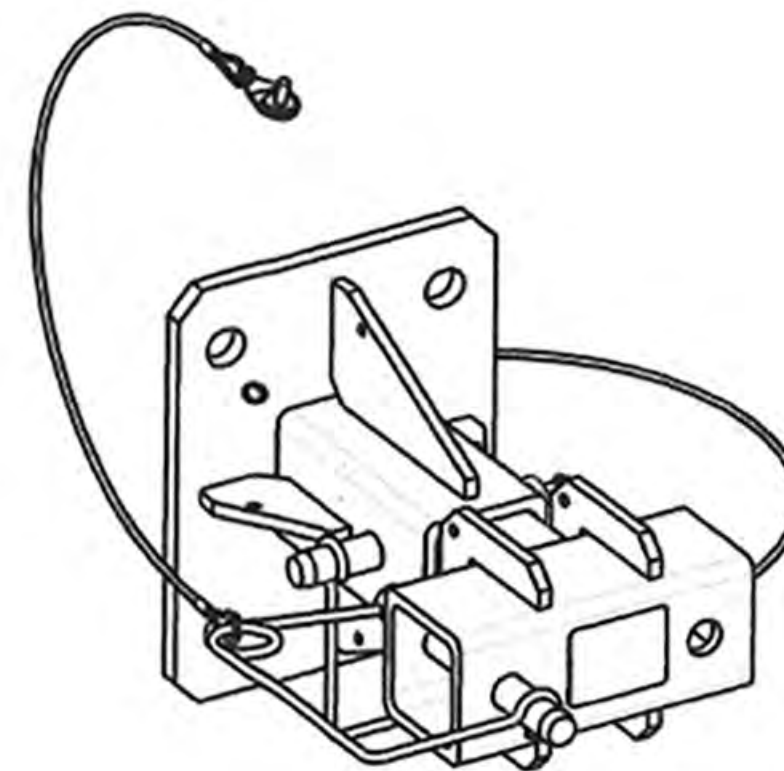
This product is to be used only with products approved by Innova public utility products INC.

IMPORTANT :

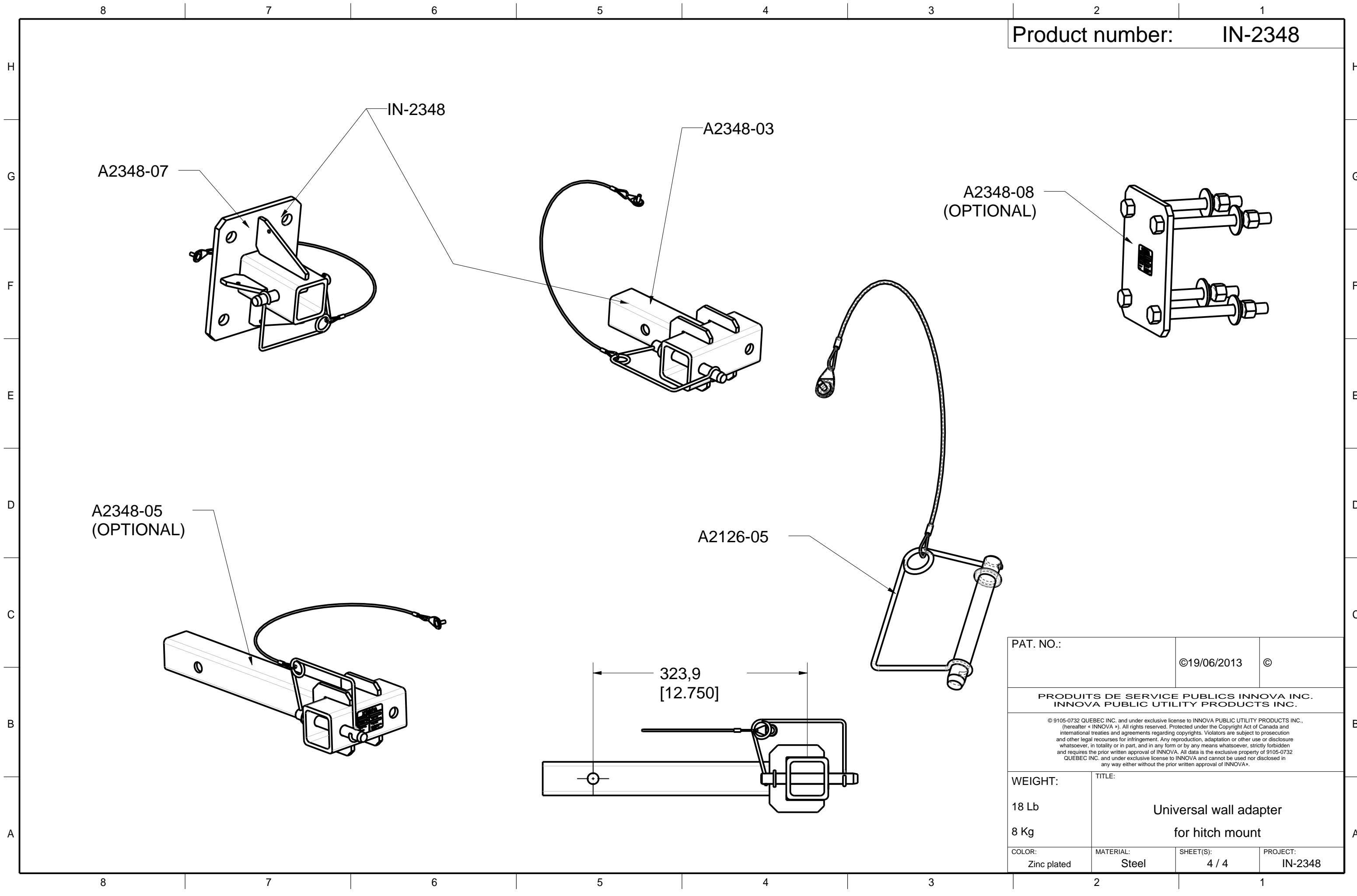
••The positioning pins must always be in place when manouvering personnel. Otherwise, serious injuries may occur.
 Periodic inspections of hardware must be done.
 In the occurance of a fall or the safety of the equipment is in doubt, equipment must be immediately removed from service and inspected by qualified personnel before reuse.

•• This equipment must always be operated in a level position.

Product number: IN-2348



PAT. NO.:		019/06/2013 ©	
PRODUITS DE SERVICE PUBLICS INNOVA INC. INNOVA PUBLIC UTILITY PRODUCTS INC.			
© 2013-2022 INNOVA INC. and under exclusive license to INNOVA PUBLIC UTILITY PRODUCTS INC., thereafter © INNOVA INC. All rights reserved. Protected under the Copyright Act of Canada and international treaties and agreements regarding copyrights. Prohibits all forms of production and other legal measures for infringement. Any reproduction, adaptation or other use of disclosure whatsoever, in whole or in part, and in any form or by any means whatsoever, strictly forbidden and requires the prior written approval of INNOVA. All data is the exclusive property of INNOVA INC. and under exclusive license to INNOVA and cannot be used nor disclosed in any way without the prior written approval of INNOVA.			
WEIGHT:	TITLE:	Universal wall adapter for hitch mount	
18 Lb 8 Kg			
COLOR:	MATERIAL:	SHEETS:	PROJECT:
Zinc plated	Steel	3 / 4	IN-2348



PAT. NO.:		©19/06/2013	©
PRODUITS DE SERVICE PUBLICS INNOVA INC. INNOVA PUBLIC UTILITY PRODUCTS INC.			
<small>© 9105-0732 QUEBEC INC. and under exclusive license to INNOVA PUBLIC UTILITY PRODUCTS INC., (hereafter « INNOVA »). All rights reserved. Protected under the Copyright Act of Canada and international treaties and agreements regarding copyrights. Violators are subject to prosecution and other legal recourses for infringement. Any reproduction, adaptation or other use or disclosure whatsoever, in totality or in part, and in any form or by any means whatsoever, strictly forbidden and requires the prior written approval of INNOVA. All data is the exclusive property of 9105-0732 QUEBEC INC. and under exclusive license to INNOVA and cannot be used nor disclosed in any way either without the prior written approval of INNOVA.</small>			
WEIGHT:	TITLE:		
18 Lb	Universal wall adapter for hitch mount		
8 Kg			
COLOR:	MATERIAL:	SHEET(S):	PROJECT:
Zinc plated	Steel	4 / 4	IN-2348