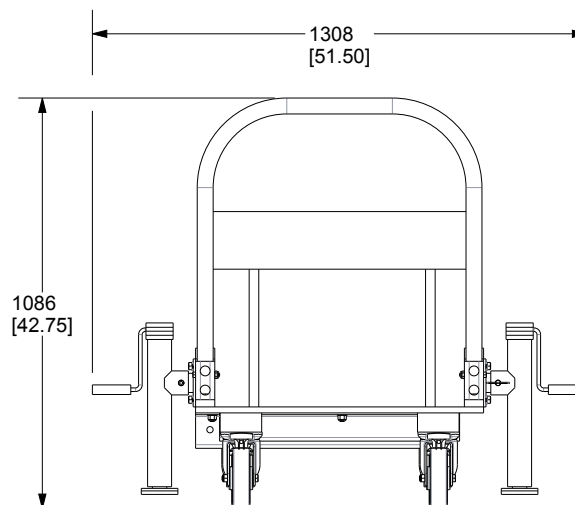
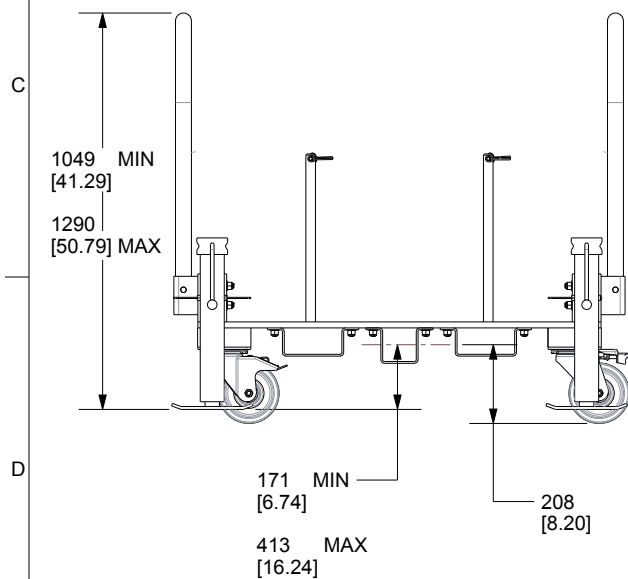
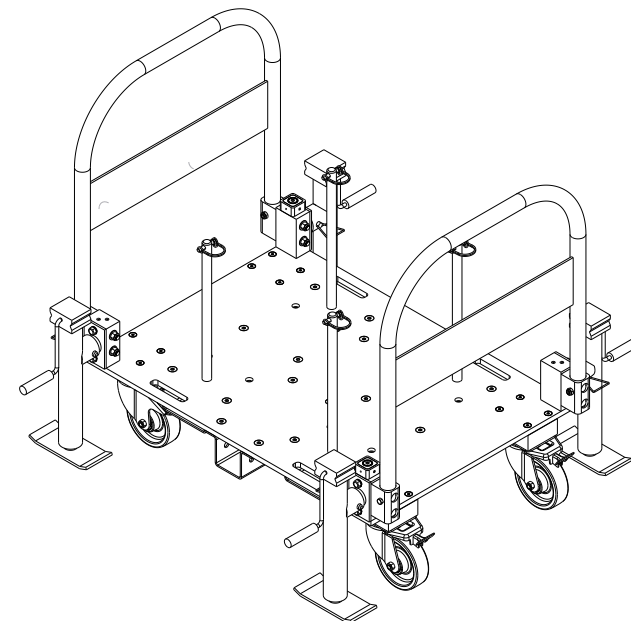
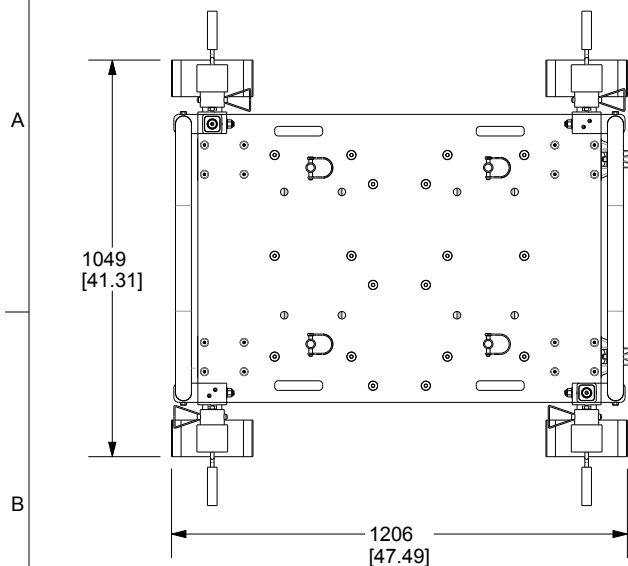


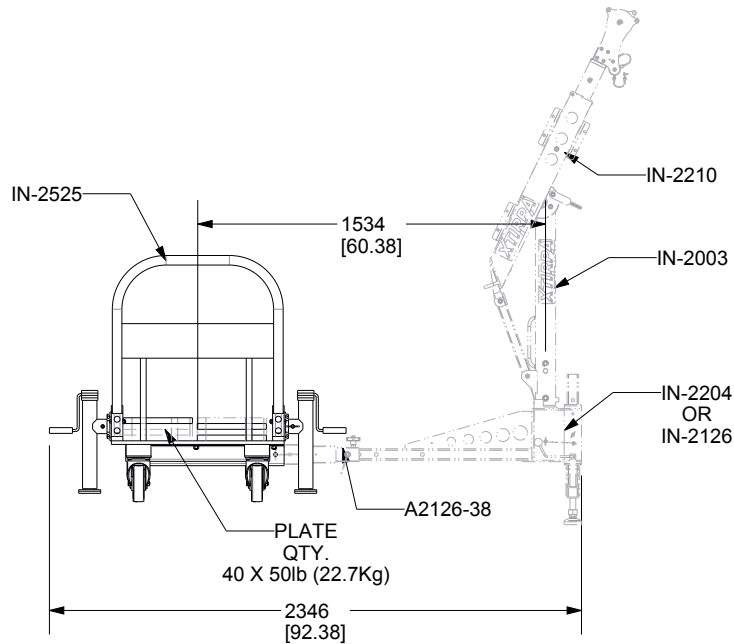
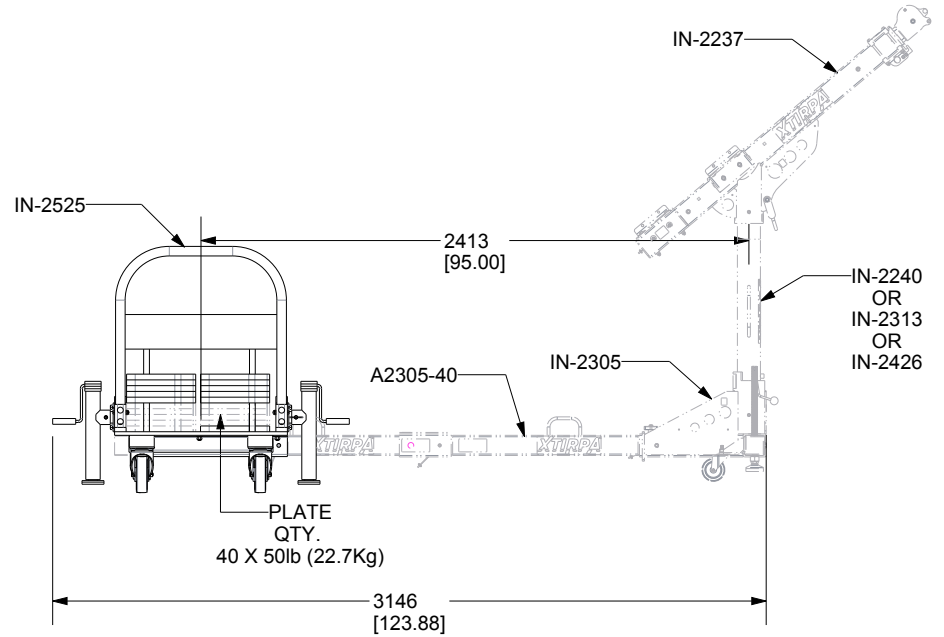
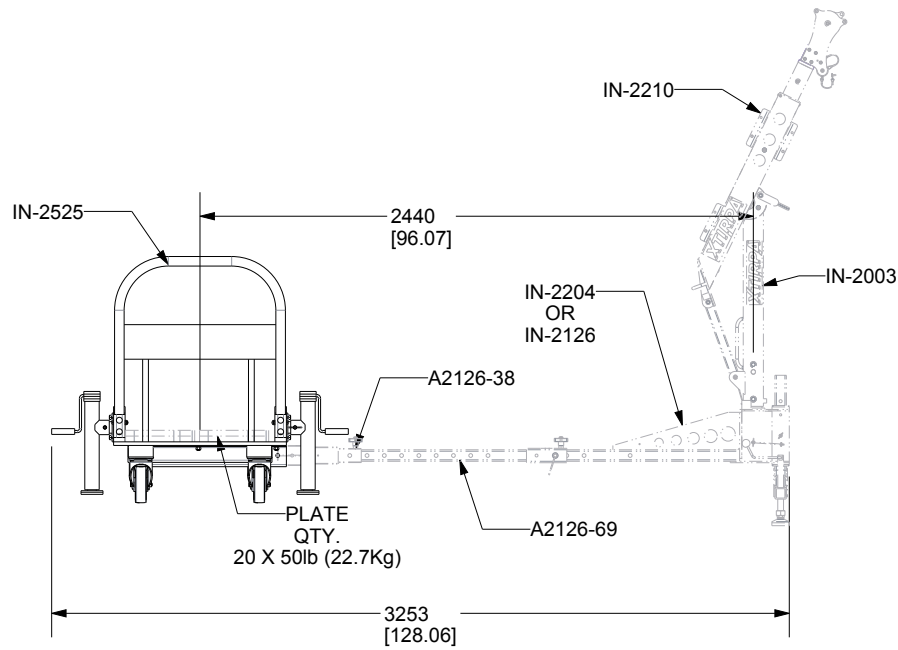
PRODUCT NUMBER: IN-2525



INNOVA PUBLIC UTILITY PRODUCTS INC.				
TITLE:				
COUNTERWEIGHT TROLLEY'S				
WEIGHT :		DRAWN BY:		VERIFIED BY:
(kg)	(lb)	P.PETIT		
218.4	481.5	DATE:		
		31/07/2018		
		SCALE:		
		1:20		
MATERIAL:		SHEET(S):	FORMAT:	No. DRAWING: REV.:
		1 / 5	A	DA2525-01 ANG 07
<small>© 9105-0732 QUEBEC INC., under exclusive license to PRODUCTS DE SERVICES PUBLICS INNOVA INC., (hereinafter "INNOVA"). All rights reserved. Protected by the Copyright Act in Canada and international treaties and conventions relating to copyright. Violators are subject to criminal prosecution and other legal remedies for infringement. Any reproduction, adaptation or other use or disclosure of any kind, in whole or in part, and in any form or by any means whatsoever either, is strictly prohibited and requires the prior written consent of INNOVA. The data is the exclusive property of 9105-0732 QUEBEC INC., under exclusive license to INNOVA and cannot be used or disclosed in any way without the prior written consent of INNOVA.</small>				

IN-2525 CONFIGURATION REQUIREMENTS (CSA,OSHA,ANSI)

PRODUCT NUMBER: IN-2525

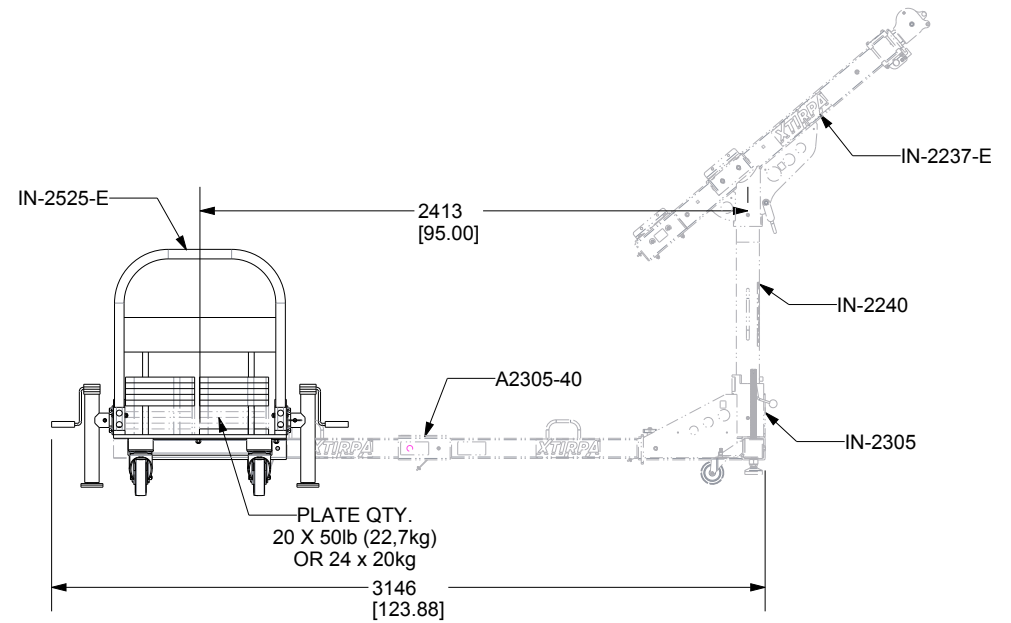
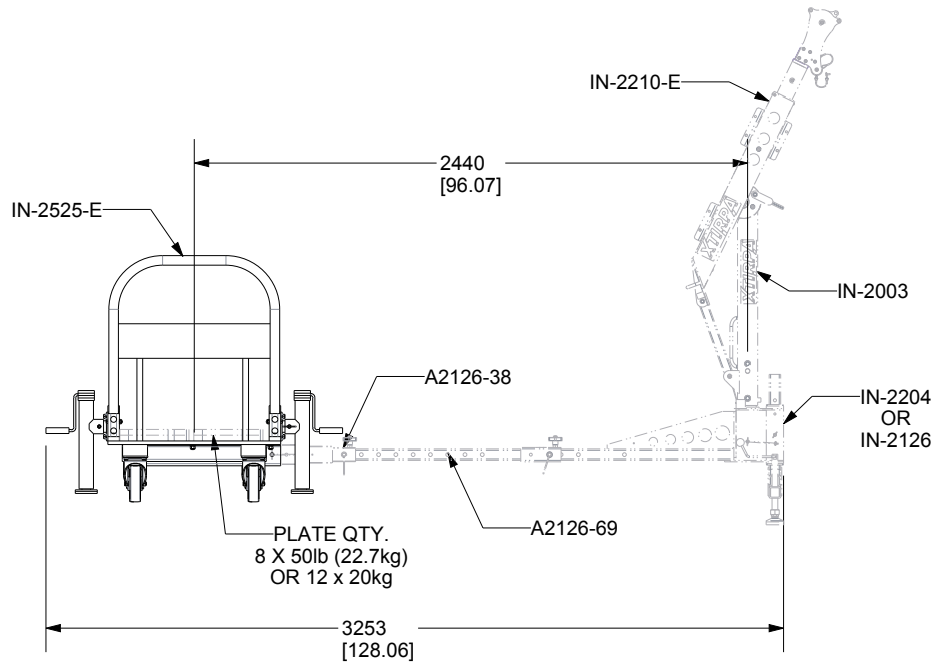


INNOVA PUBLIC UTILITY PRODUCTS INC.				
TITLE:				
COUNTERWEIGHT TROLLEY'S				
WEIGHT :		DRAWN BY:		
(kg)	(lb)	P.PETIT		
218.4	481.5	DATE: 31/07/2018		
		SCALE: 7:100		
MATERIAL:		SHEET(S):	FORMAT:	No. DRAWING:
		2 / 5	A	DA2525-01 ANG 07
<small>© 9105-0732 QUEBEC INC., under exclusive license to PRODUCTS DE SERVICES PUBLICS INNOVA INC., (hereinafter "INNOVA"). All rights reserved. Protected by the Copyright Act in Canada and international treaties and conventions relating to copyright. Violators are subject to criminal prosecution and other legal remedies for infringement. Any reproduction, adaptation or other use or disclosure of any kind, in whole or in part, and in any form or by any means whatsoever either, is strictly prohibited and requires the prior written consent of INNOVA. The data is the exclusive property of 9105-0732 QUEBEC INC., under exclusive license to INNOVA and cannot be used or disclosed in any way without the prior written consent of INNOVA.</small>				

IN-2525 CONFIGURATION REQUIREMENTS (EN 795,TS16415)

PRODUCT NUMBER: IN-2525

A

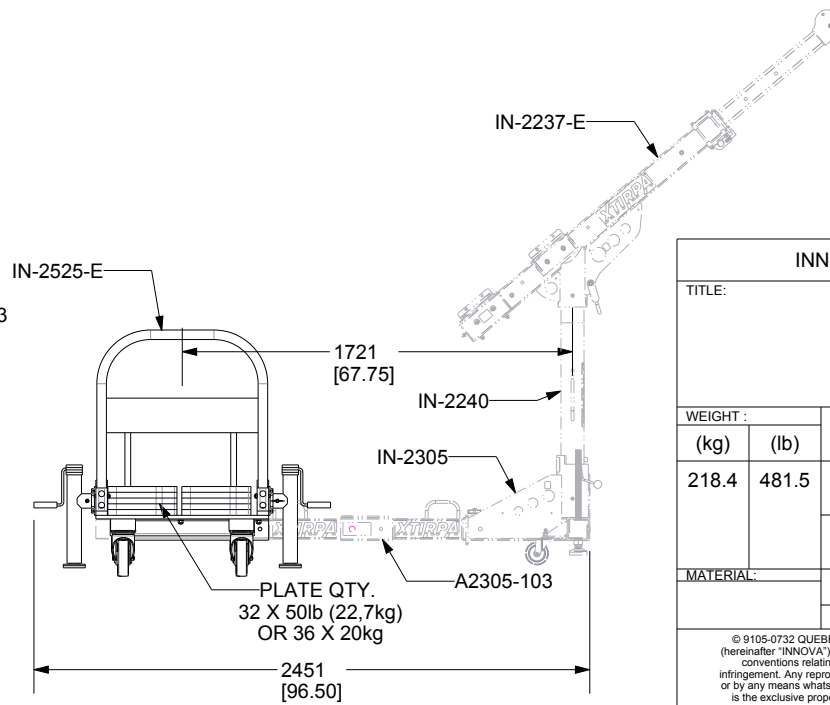
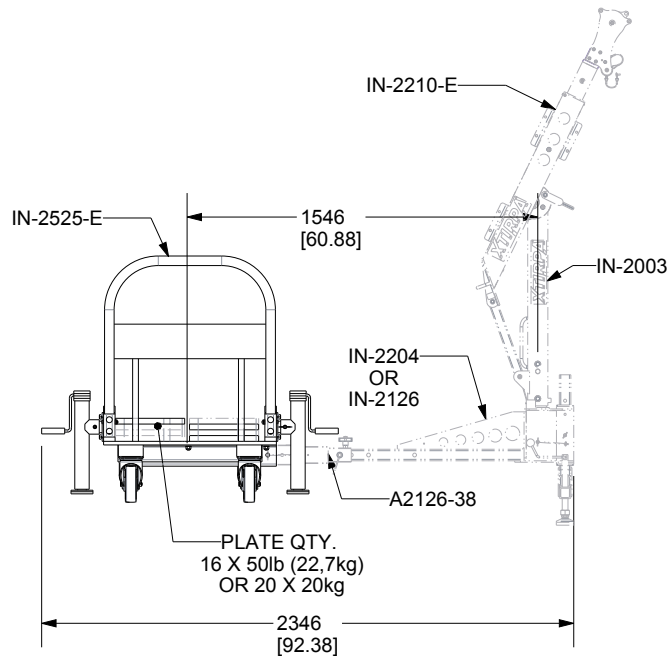


B

B


C

C



D

D

INNOVA PUBLIC UTILITY PRODUCTS INC.				
TITLE:				
COUNTERWEIGHT TROLLEY'S				
WEIGHT :		DRAWN BY:		VERIFIED BY:
(kg)	(lb)	P.PETIT		
218.4	481.5	DATE:		
31/07/2018				
SCALE:		7:100		
MATERIAL:		SHEET(S):	FORMAT:	No. DRAWING:
		3 / 5	A	DA2525-01 ANG 07
<small>© 9105-0732 QUEBEC INC., under exclusive license to PRODUCTS DE SERVICES PUBLICS INNOVA INC., (hereinafter "INNOVA"). All rights reserved. Protected by the Copyright Act in Canada and international treaties and conventions relating to copyright. Violators are subject to criminal prosecution and other legal remedies for infringement. Any reproduction, adaptation or other use or disclosure of any kind, in whole or in part, and in any form or by any means whatsoever either, is strictly prohibited and requires the prior written consent of INNOVA. The data is the exclusive property of 9105-0732 QUEBEC INC., under exclusive license to INNOVA and cannot be used or disclosed in any way without the prior written consent of INNOVA.</small>				

SPECIFICATIONS

THIS EQUIPMENT IS CONSIDERED AS PART OF A PERSONAL FALL ARREST SYSTEM (PFAS).

IT IS ONLY TO BE USED IN CONJUNCTION WITH A PERSONAL FALL ARREST SYSTEM THAT LIMITS THE MAXIMUM ARREST FORCE (MAF) TO 8,0 kN.

WORKING LOAD LIMIT (WLL) : 164 kg (360 lb)

STANDARDS

NAME	CLASSIFICATION	YEAR	USERS
AS / NZS 5532	FREEFALL ARREST	2013	1
ANSI Z359.18	D	2017	1
CSA Z259.15	AD	2022	1
OSHA 1910.140			1
OSHA 1926.502			1
EN 795	E	2012	1
TS 16415		2013	3

MATERIAL AND CONSTRUCTION

WELDING CERTIFICATION :	STRUCTURE :	MATERIAL :
STEEL / STAINLESS STEEL CSA W59.18 / CSA W47.1 / AWS D 1.6	STEEL 44W	STAINLESS STEEL

ALUMINIUM
CSA W59.2 / CSA W47.2

RESTRICTIONS

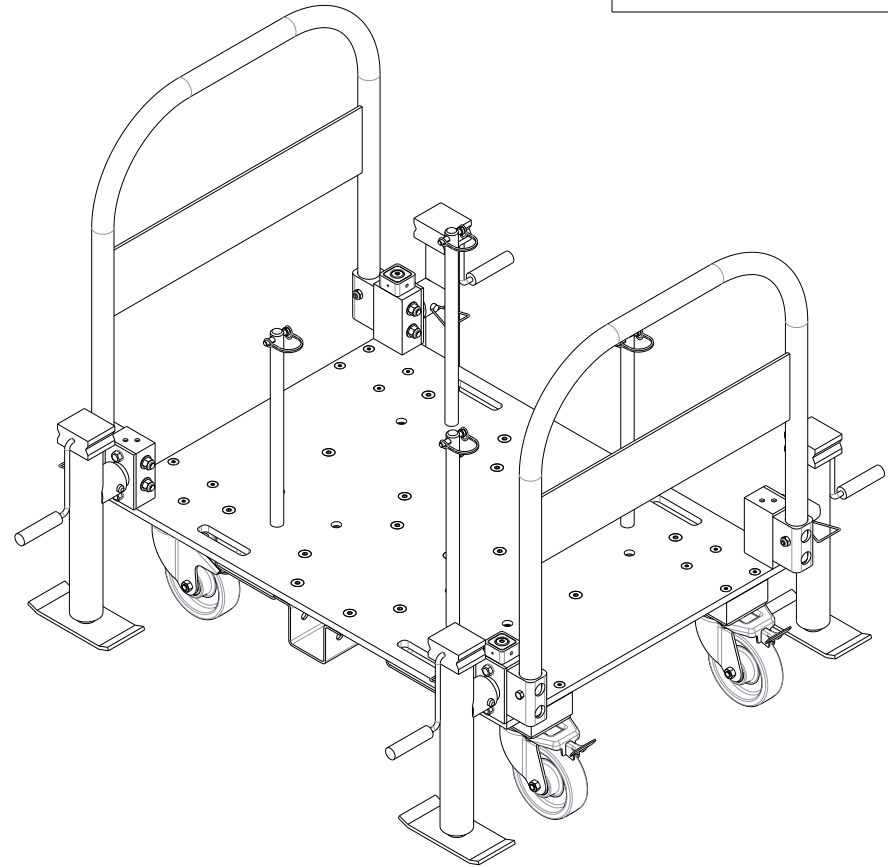
THIS EQUIPMENT SHOULD ONLY BE USED WITH PRODUCTS APPROVED BY INNOVA PUBLIC UTILITY PRODUCTS Inc.

THIS EQUIPMENT MUST ALWAYS BE OPERATED AT A LEVEL OF $\pm 5^\circ$ AND REST ON ITS 4 LEGS.

MAKE SURE ALL HARDWARE AND CONNECTION PINS ARE PROPERLY INSTALLED BEFORE USE.

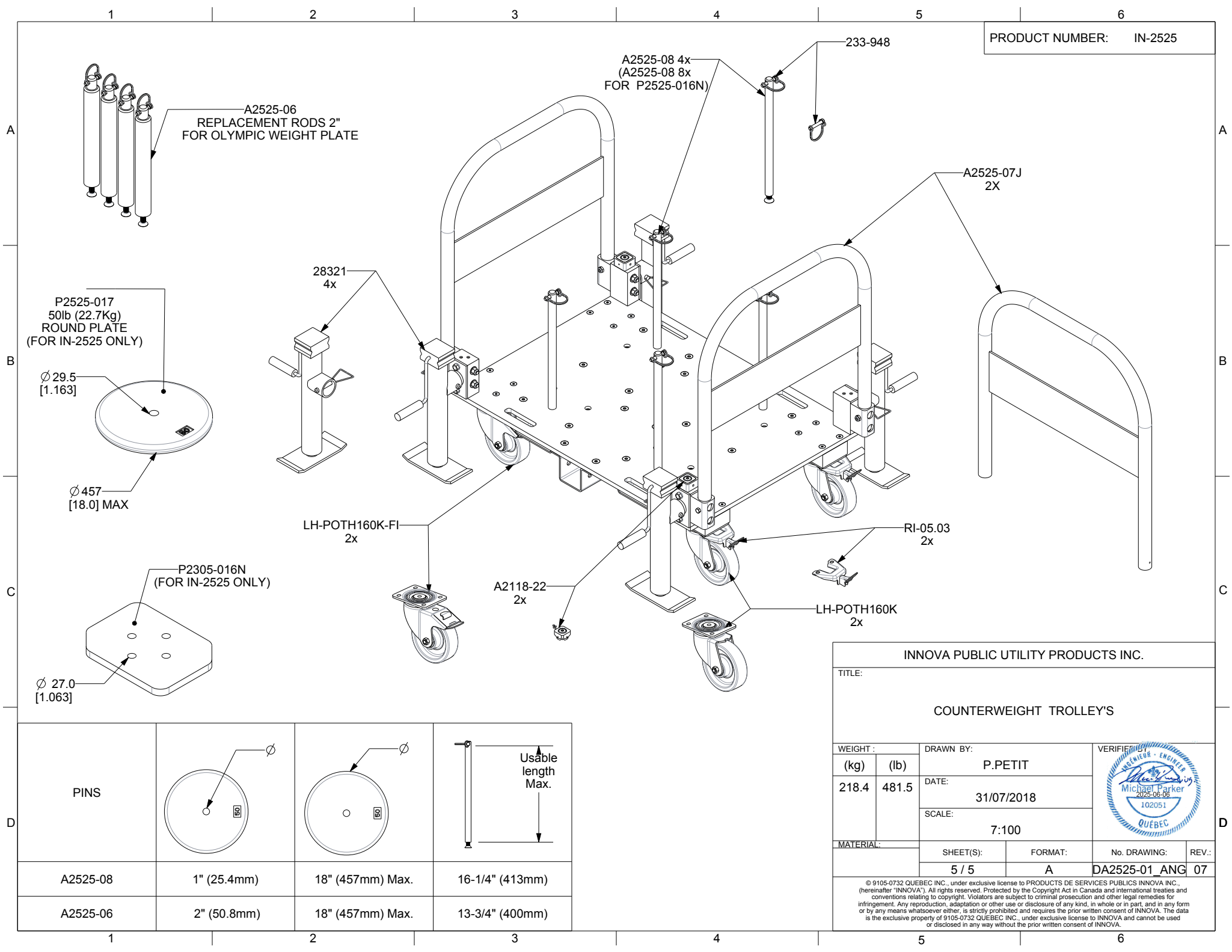
IN CASE OF FALL OR EQUIPMENT SAFETY IF IN DOUBT, THE EQUIPMENT SHOULD BE REMOVED FROM THE EQUIPMENT IMMEDIATELY. SERVICED AND INSPECTED BY A QUALIFIED PERSON BEFORE REUSE.

PRODUCT NUMBER: IN-2525



ALSO AVAILABLE CLEAR ANODIZED

INNOVA PUBLIC UTILITY PRODUCTS INC.					
TITLE:					
COUNTERWEIGHT TROLLEY'S					
WEIGHT :		DRAWN BY:		VERIFIED BY:	
(kg)	(lb)	P.PETIT			
218.4	481.5	DATE:			
		31/07/2018			
		SCALE:			
		7:100			
MATERIAL:		SHEET(S):		FORMAT:	No. DRAWING:
		4 / 5		A	DA2525-01 ANG 07
<small>© 9105-0732 QUEBEC INC., under exclusive license to PRODUCTS DE SERVICES PUBLICS INNOVA INC., (hereinafter "INNOVA"). All rights reserved. Protected by the Copyright Act in Canada and international treaties and conventions relating to copyright. Violators are subject to criminal prosecution and other legal remedies for infringement. Any reproduction, adaptation or other use or disclosure of any kind, in whole or in part, and in any form or by any means whatsoever either, is strictly prohibited and requires the prior written consent of INNOVA. The data is the exclusive property of 9105-0732 QUEBEC INC., under exclusive license to INNOVA and cannot be used or disclosed in any way without the prior written consent of INNOVA.</small>					



PRODUCT NUMBER: IN-2525

INNOVA PUBLIC UTILITY PRODUCTS INC.

TITLE:

COUNTERWEIGHT TROLLEY'S

WEIGHT :		DRAWN BY:		VERIFIED BY:	
(kg)	(lb)	P.PETIT			
218.4	481.5	DATE:			
		31/07/2018			
		SCALE:			
		7:100			
MATERIAL:		SHEET(S):	FORMAT:	No. DRAWING:	REV.:
		5 / 5	A	DA2525-01	ANG 07

© 9105-0732 QUEBEC INC., under exclusive license to PRODUCTS DE SERVICES PUBLICS INNOVA INC., (hereinafter "INNOVA"). All rights reserved. Protected by the Copyright Act in Canada and international treaties and conventions relating to copyright. Violators are subject to criminal prosecution and other legal remedies for infringement. Any reproduction, adaptation or other use or disclosure of any kind, in whole or in part, and in any form or by any means whatsoever either, is strictly prohibited and requires the prior written consent of INNOVA. The data is the exclusive property of 9105-0732 QUEBEC INC., under exclusive license to INNOVA and cannot be used or disclosed in any way without the prior written consent of INNOVA.

