



## SPECIFICATIONS

THIS EQUIPMENT IS CONSIDERED AS PART OF A PERSONAL FALL ARREST SYSTEM (PFAS).

IT IS ONLY TO BE USED IN CONJUNCTION WITH A PERSONAL FALL ARREST SYSTEM THAT LIMITS THE MAXIMUM ARREST FORCE (MAF) TO 8,0 kN.

|   |         |             |
|---|---------|-------------|
| WORKING LOAD LIMIT (WLL) :                                | 164 kg  | (360 lb)    |
| MINIMUM BREAKING STRENGTH FOR ANCHORAGE 1 (F1,F2 AND F3): | 22,2 kN | (5 000 lbf) |
| MINIMUM BREAKING STRENGTH FOR ANCHORAGE 2 (F1):           | 22,2 kN | (5 000 lbf) |
| MINIMUM BREAKING STRENGTH FOR ANCHORAGE 3 (F1):           | 22,2 kN | (5 000 lbf) |
| MINIMUM BREAKING STRENGTH FOR ATTACHMENT POINT 1:         | 22,2 kN | (5 000 lbf) |
| MINIMUM BREAKING STRENGTH FOR ATTACHMENT POINT 2:         | 22,2 kN | (5 000 lbf) |

## STANDARDS

| NAME          | CLASSIFICATION  | YEAR | USERS |
|---------------|-----------------|------|-------|
| AS / NZS 5532 | FREEFALL ARREST | 2013 | 1     |
| ANSI Z359.18  | D               | 2017 | 1     |
| CSA Z259.15   | AD              | 2022 | 1     |
| OSHA 1910.140 |                 |      | 1     |
| OSHA 1926.502 |                 |      | 1     |
| EN 795        | A               | 2012 | 1     |

## MATERIAL AND CONSTRUCTION

### WELDING CERTIFICATION :

STEEL / STAINLESS STEEL  
CSA W59.18 / CSA W47.1 / AWS D 1.6

### STRUCTURE :

ALUMINUM

### ARDWARE:

STAINLESS STEEL

ALUMINIUM  
CSA W59.2 / CSA W47.2

## RESTRICTIONS

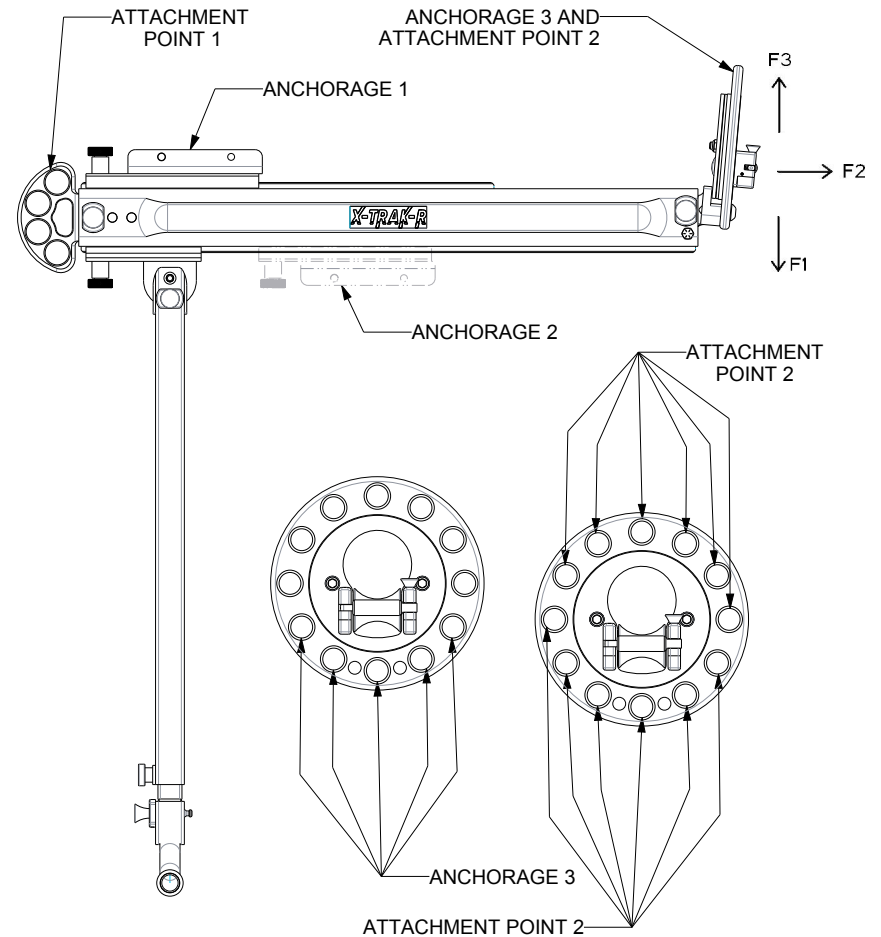
THIS EQUIPMENT SHOULD ONLY BE USED WITH PRODUCTS APPROVED BY INNOVA PUBLIC UTILITY PRODUCTS Inc.

THIS EQUIPMENT SHOULD ALWAYS BE USED ON A SURFACE LEVEL

MAKE SURE ALL HARDWARE AND CONNECTION PINS ARE PROPERLY INSTALLED BEFORE USE.

IN CASE OF FALL OR EQUIPMENT SAFETY IF IN DOUBT, THE EQUIPMENT SHOULD BE REMOVED FROM THE EQUIPMENT IMMEDIATELY. SERVICED AND INSPECTED BY A QUALIFIED PERSON BEFORE REUSE.


PRODUCT NUMBER: IN-2557



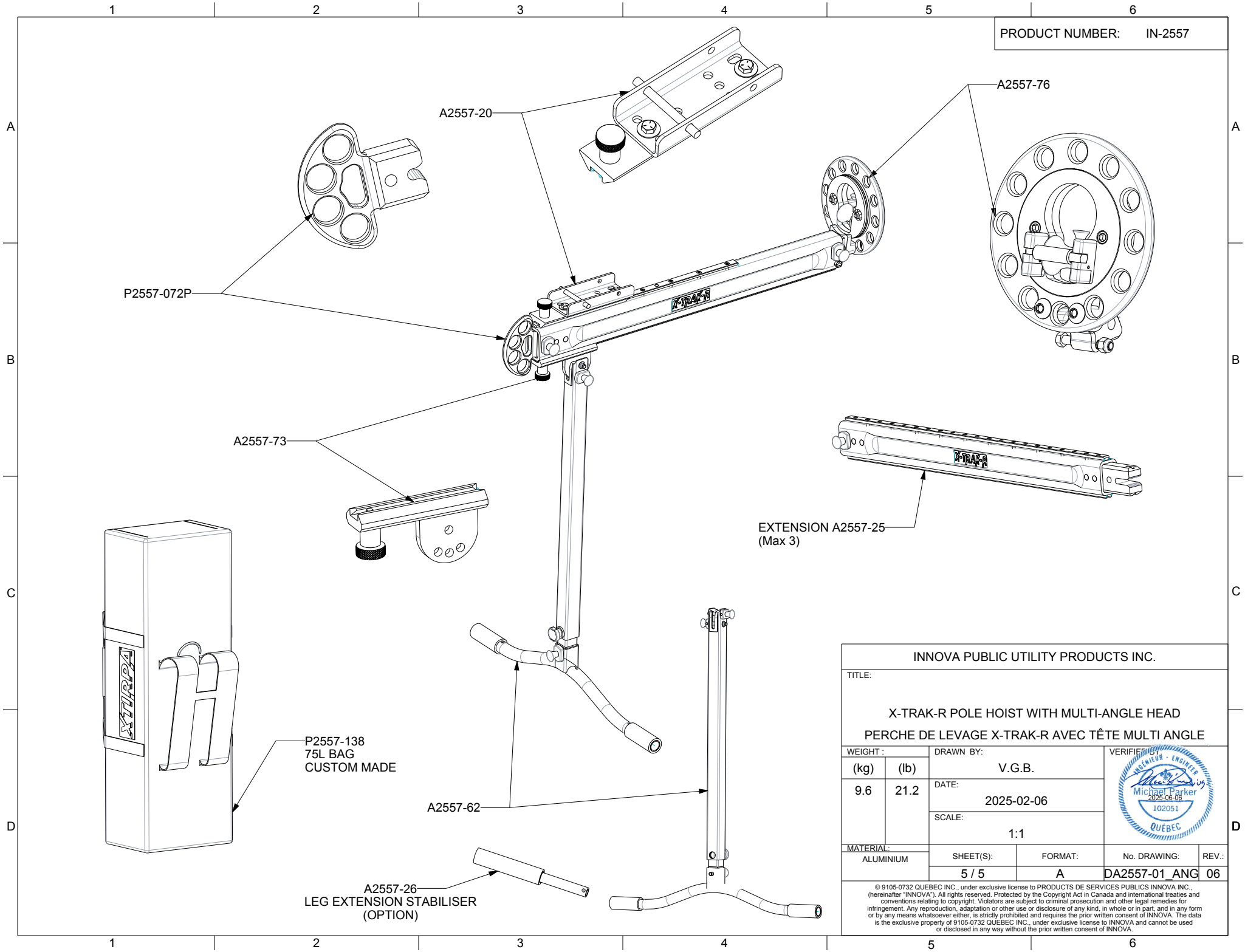
INNOVA PUBLIC UTILITY PRODUCTS INC.

TITLE:


X-TRAK-R POLE HOIST WITH MULTI-ANGLE HEAD  
PERCHE DE LEVAGE X-TRAK-R AVEC TÊTE MULTI ANGLE

|           |      |                         |                  |   |       |
|-----------|------|-------------------------|------------------|---|-------|
| WEIGHT :  |      | DRAWN BY:               |                  |  |       |
| (kg)      | (lb) | V.G.B.                  |                  |   |       |
| 9.6       | 21.2 | DATE:<br><br>2025-02-06 |                  |   |       |
|           |      | SCALE:<br><br>1:1       |                  |   |       |
| MATERIAL: |      |                         |                  |   |       |
| ALUMINIUM |      | SHEET(S):<br><br>4 / 5  | FORMAT:<br><br>A | No. DRAWING:  | REV.: |
|           |      |                         |                  | DA2557-01 ANG   | 06    |

© 9105-0732 QUEBEC INC., under exclusive license to PRODUCTS DE SERVICES PUBLICS INNOVA INC., (hereinafter "INNOVA"). All rights reserved. Protected by the Copyright Act in Canada and international treaties and conventions relating to copyright. Violators are subject to criminal prosecution and other legal remedies for infringement. Any reproduction, adaptation or other use or disclosure of any kind, in whole or in part, and in any form or by any means whatsoever either, is strictly prohibited and requires the prior written consent of INNOVA. The data is the exclusive property of 9105-0732 QUEBEC INC., under exclusive license to INNOVA and cannot be used or disclosed in any way without the prior written consent of INNOVA.



PRODUCT NUMBER: IN-2557

|  |      |            |         |   |       |
|--|------|------------|---------|---|-------|
| INNOVA PUBLIC UTILITY PRODUCTS INC.  |      |            |         |   |       |
| TITLE:   |      |            |         |   |       |
| X-TRAK-R POLE HOIST WITH MULTI-ANGLE HEAD<br>PERCHE DE LEVAGE X-TRAK-R AVEC TÊTE MULTI ANGLE   |      |            |         |   |       |
| WEIGHT :   |      | DRAWN BY:  |         | VERIFIED BY:  |       |
| (kg)   | (lb) | V.G.B.     |         |  |       |
| 9.6  | 21.2 | DATE:      |         |   |       |
|  |      | 2025-02-06 |         |   |       |
|  |      | SCALE:     |         |   |       |
|  |      | 1:1        |         |   |       |
| MATERIAL:  |      | SHEET(S):  | FORMAT: | No. DRAWING:  | REV.: |
| ALUMINIUM  |      | 5 / 5      | A       | DA2557-01 ANG   | 06    |
| <small>© 9105-0732 QUEBEC INC., under exclusive license to PRODUCTS DE SERVICES PUBLICS INNOVA INC., (hereinafter "INNOVA"). All rights reserved. Protected by the Copyright Act in Canada and international treaties and conventions relating to copyright. Violators are subject to criminal prosecution and other legal remedies for infringement. Any reproduction, adaptation or other use or disclosure of any kind, in whole or in part, and in any form or by any means whatsoever either, is strictly prohibited and requires the prior written consent of INNOVA. The data is the exclusive property of 9105-0732 QUEBEC INC., under exclusive license to INNOVA and cannot be used or disclosed in any way without the prior written consent of INNOVA.</small> |      |            |         |   |       |