


PRODUCT NUMBER: IN-5039

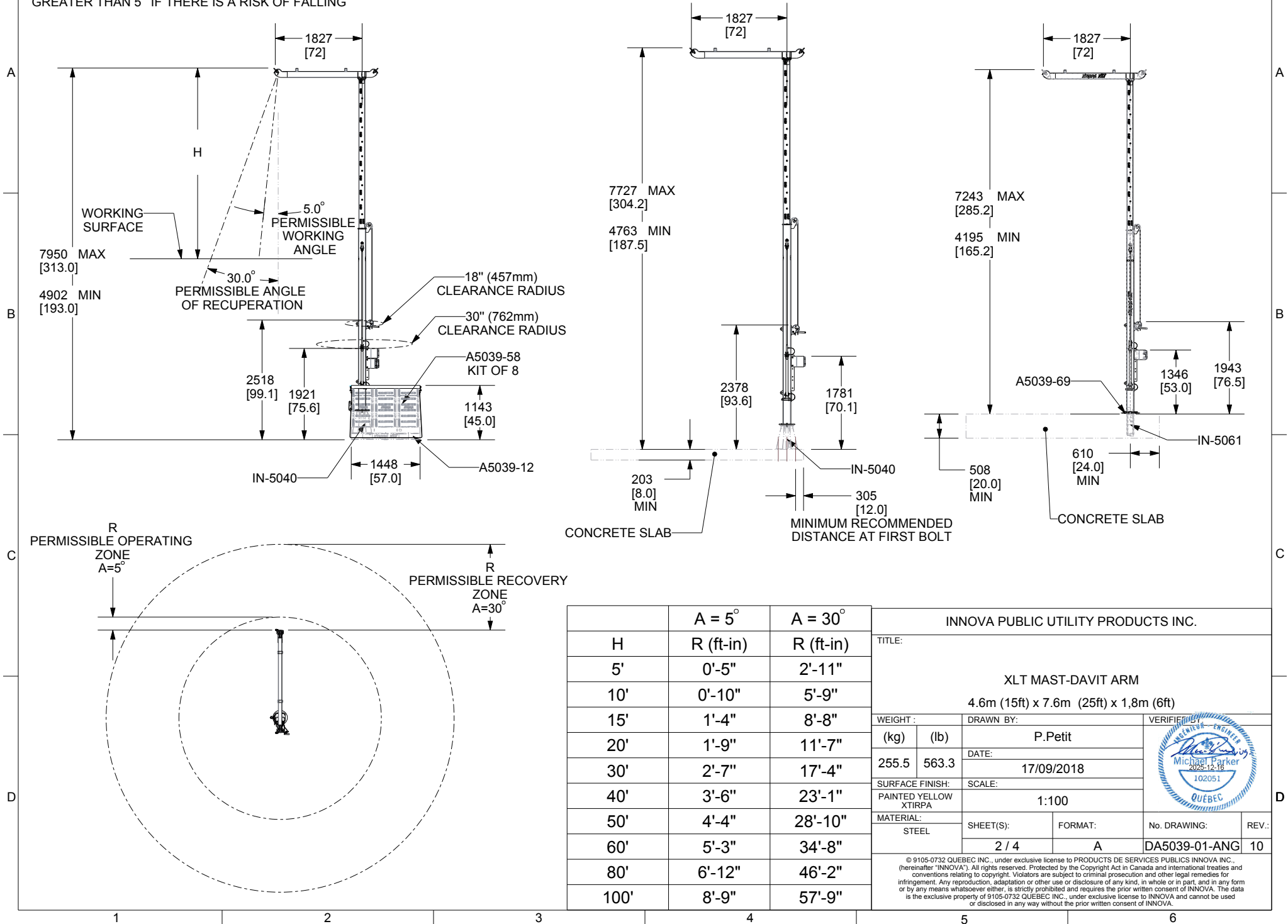
INNOVA PUBLIC UTILITY PRODUCTS INC.


TITLE:					
XLT MAST-DAVIT ARM					
4.6m (15ft) x 7.6m (25ft) x 1,8m (6ft)					
WEIGHT :		DRAWN BY:		VERIFIED BY:	
(kg)	(lb)	P.Petit			
255.5	563.3	DATE:			
SURFACE FINISH:		37/09/2018			
PAINTED YELLOW XTIRPA		SCALE:			
MATERIAL:		3:100			
STEEL		SHEET(S):	FORMAT:	No. DRAWING:	REV.:
		1 / 4	A	DA5039-01-ANG	10

© 9105-0732 QUEBEC INC., under exclusive license to PRODUCTS DE SERVICES PUBLICS INNOVA INC., (hereinafter "INNOVA"). All rights reserved. Protected by the Copyright Act in Canada and international treaties and conventions relating to copyright. Violators are subject to criminal prosecution and other legal remedies for infringement. Any reproduction, adaptation or other use or disclosure of any kind, in whole or in part, and in any form or by any means whatsoever either, is strictly prohibited and requires the prior written consent of INNOVA. The data is the exclusive property of 9105-0732 QUEBEC INC., under exclusive license to INNOVA and cannot be used or disclosed in any way without the prior written consent of INNOVA.

IMPORTANT:  
IT IS PROHIBITED TO GO AT AN ANGLE  
GREATER THAN 5° IF THERE IS A RISK OF FALLING

PRODUCT NUMBER: IN-5039



	A = 5°	A = 30°	INNOVA PUBLIC UTILITY PRODUCTS INC.					
H	R (ft-in)	R (ft-in)	TITLE:					
5'	0'-5"	2'-11"	XLT MAST-DAVIT ARM					
10'	0'-10"	5'-9"	4.6m (15ft) x 7.6m (25ft) x 1.8m (6ft)					
15'	1'-4"	8'-8"	WEIGHT :		DRAWN BY:		VERIFIED BY:	
20'	1'-9"	11'-7"	(kg)	(lb)	P.Petit			
30'	2'-7"	17'-4"	255.5	563.3	DATE:			
40'	3'-6"	23'-1"			17/09/2018			
50'	4'-4"	28'-10"	SURFACE FINISH:		SCALE:			
60'	5'-3"	34'-8"	PAINTED YELLOW XTIRPA		1:100			
80'	6'-12"	46'-2"	MATERIAL:		SHEET(S):		No. DRAWING:	
100'	8'-9"	57'-9"	STEEL		2 / 4		A	
							DA5039-01-ANG	
							10	
<p>© 9105-0732 QUEBEC INC., under exclusive license to PRODUCTS DE SERVICES PUBLICS INNOVA INC., (hereinafter "INNOVA"). All rights reserved. Protected by the Copyright Act in Canada and international treaties and conventions relating to copyright. Violators are subject to criminal prosecution and other legal remedies for infringement. Any reproduction, adaptation or other use or disclosure of any kind, in whole or in part, and in any form or by any means whatsoever either, is strictly prohibited and requires the prior written consent of INNOVA. The data is the exclusive property of 9105-0732 QUEBEC INC., under exclusive license to INNOVA and cannot be used or disclosed in any way without the prior written consent of INNOVA.</p>								

## SPECIFICATIONS

THIS EQUIPMENT IS CONSIDERED AS PART OF A PERSONAL FALL ARREST SYSTEM (PFAS).

IT IS ONLY TO BE USED IN CONJUNCTION WITH A PERSONAL FALL ARREST SYSTEM THAT LIMITS THE MAXIMUM ARREST FORCE (MAF) TO 8,0 kN.

WORKING LOAD LIMIT (WLL) :	164 kg	(360 lb)
MINIMUM BREAKING STRENGTH FOR ANCHORAGE 1 (F1):	17,9 kN	(4024 lbf)
MINIMUM BREAKING STRENGTH FOR ANCHORAGE 2 (F2):	17,9 kN	(4024 lbf)
MINIMUM BREAKING STRENGTH FOR ANCHORAGE 3 (F3):	17,9 kN	(4024 lbf)
MINIMUM BREAKING STRENGTH FOR ANCHORAGE 4 (F4):	12,0 kN	(2698 lbf)

## STANDARDS

NAME	CLASSIFICATION	YEAR	USERS
AS / NZS 5532	FREEFALL ARREST	2013	1
ANSI Z359.18	D	2017	1
CSA Z259.15	AD	2022	1
OSHA 1910.140			1
OSHA 1926.502			1
EN 795 / TS 16415	TYPE A,E	2012 / 2013	3

## MATERIAL AND CONSTRUCTION

### WELDING CERTIFICATION :

STEEL / STAINLESS STEEL  
CSA W59.18 / CSA W47.1 / AWS D 1.6

### STRUCTURE :

STEEL

### HARDWARE :

STAINLESS STEEL

ALUMINUM  
CSA W59.2 / CSA W47.2

## RESTRICTIONS

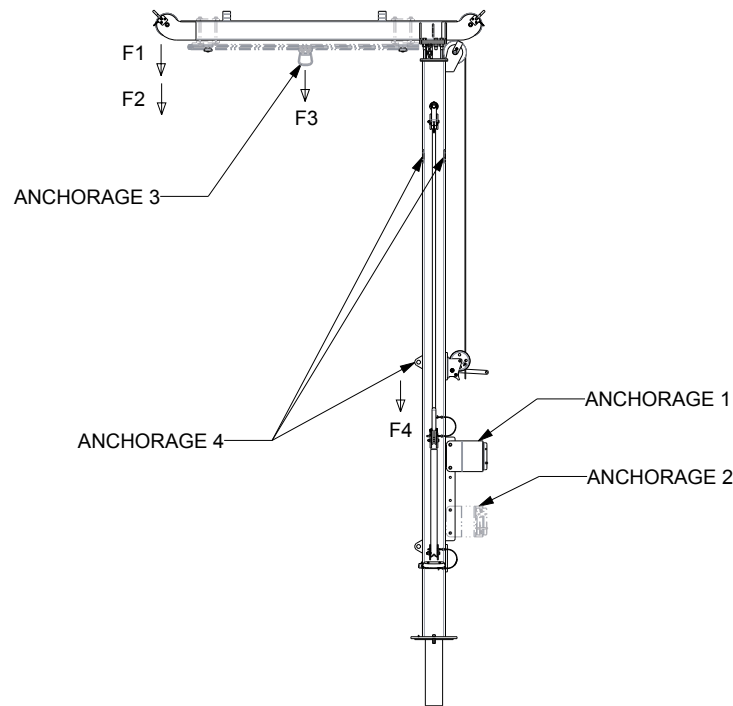
THIS EQUIPMENT SHOULD ONLY BE USED WITH PRODUCTS APPROVED BY INNOVA PUBLIC UTILITY PRODUCTS Inc.

THIS EQUIPMENT SHOULD ALWAYS BE USED ON A LEVELED SURFACE.

MAKE SURE ALL HARDWARE AND CONNECTION PINS ARE PROPERLY INSTALLED BEFORE USE.

IN CASE OF FALL OR EQUIPMENT SAFETY IF IN DOUBT, THE EQUIPMENT SHOULD BE REMOVED FROM THE EQUIPMENT IMMEDIATELY. SERVICED AND INSPECTED BY A QUALIFIED PERSON BEFORE REUSE.

PRODUCT NUMBER: IN-5039




## INNOVA PUBLIC UTILITY PRODUCTS INC.

TITLE:

XLT MAST-DAVIT ARM

4.6m (15ft) x 7.6m (25ft) x 1,8m (6ft)

WEIGHT :		DRAWN BY:			
(kg)	(lb)	P.Petit			
255.5	563.3	DATE:	17/09/2018		
SURFACE FINISH:		SCALE:			
PAINTED YELLOW XTIRPA		1:100			
MATERIAL:					
STEEL		SHEET(S):	FORMAT:	No. DRAWING:	REV:
		3 / 4	A	DA5039-01-ANG	10

© 9105-0732 QUEBEC INC., under exclusive license to PRODUCTS DE SERVICES PUBLICS INNOVA INC., (hereinafter "INNOVA"). All rights reserved. Protected by the Copyright Act in Canada and international treaties and conventions relating to copyright. Violators are subject to criminal prosecution and other legal remedies for infringement. Any reproduction, adaptation or other use or disclosure of any kind, in whole or in part, and in any form or by any means whatsoever either, is strictly prohibited and requires the prior written consent of INNOVA. The data is the exclusive property of 9105-0732 QUEBEC INC., under exclusive license to INNOVA and cannot be used or disclosed in any way without the prior written consent of INNOVA.

