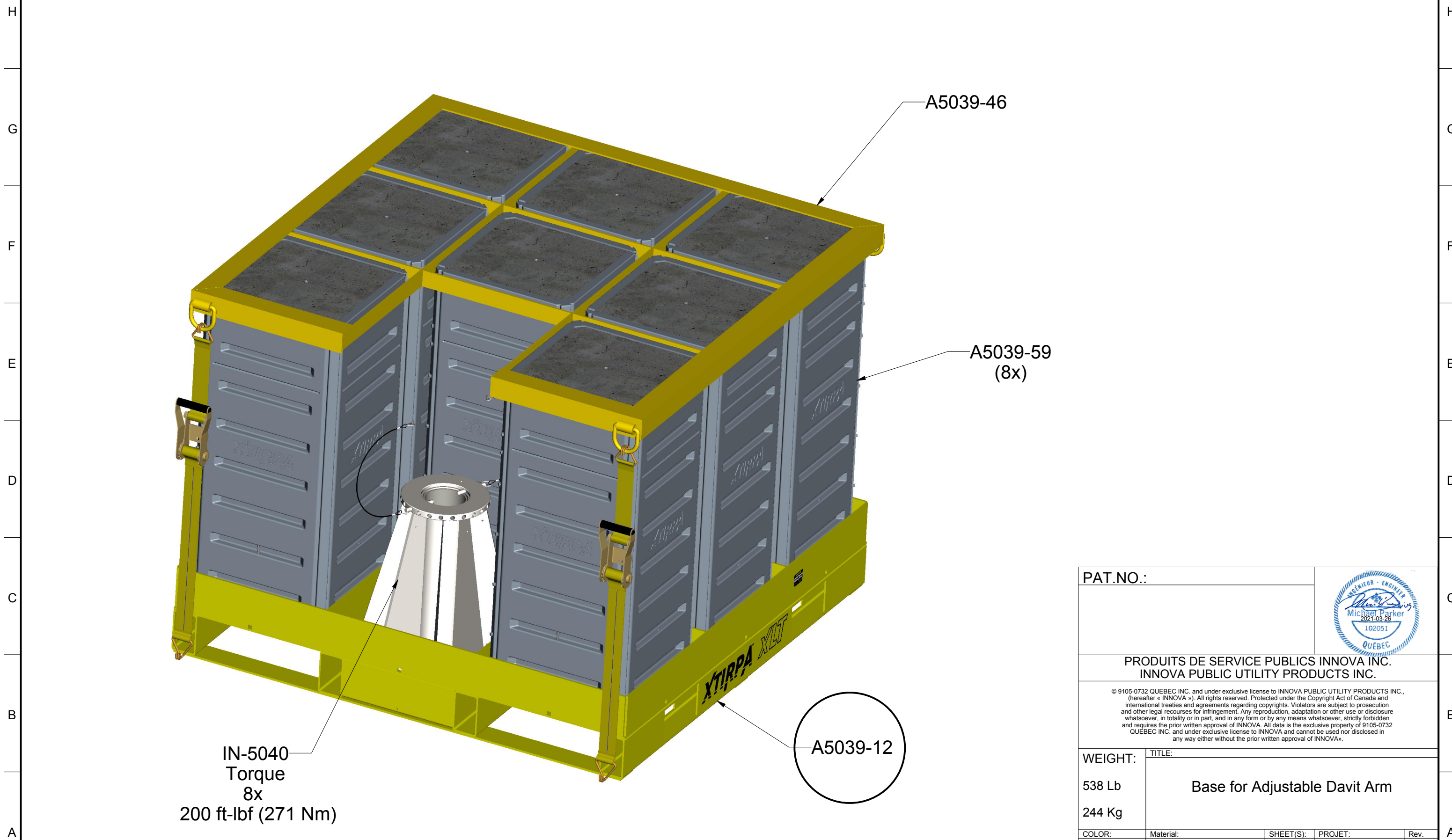


PAT.NO.:				
PRODUITS DE SERVICE PUBLICS INNOVA INC. INNOVA PUBLIC UTILITY PRODUCTS INC.				
<small>© 9105-0732 QUEBEC INC. and under exclusive license to INNOVA PUBLIC UTILITY PRODUCTS INC., (hereafter « INNOVA »). All rights reserved. Protected under the Copyright Act of Canada and international treaties and agreements regarding copyrights. Violators are subject to prosecution and other legal recourses for infringement. Any reproduction, adaptation or other use or disclosure whatsoever, in totality or in part, and in any form or by any means whatsoever, strictly forbidden and requires the prior written approval of INNOVA. All data is the exclusive property of 9105-0732 QUEBEC INC. and under exclusive license to INNOVA and cannot be used nor disclosed in any way either without the prior written approval of INNOVA.</small>				
WEIGHT:	TITLE:			
538 Lb 244 Kg	Base for Adjustable Davit Arm			
COLOR:	Material:	SHEET(S):	PROJET:	Rev.
SAFETY YELLOW	STEEL	1 / 4	A5039-12	03

8 7 6 5 4 3 2 1

Product number: A5039-12



PAT.NO.:

PRODUITS DE SERVICE PUBLICS INNOVA INC.
INNOVA PUBLIC UTILITY PRODUCTS INC.

© 9105-0732 QUEBEC INC. and under exclusive license to INNOVA PUBLIC UTILITY PRODUCTS INC., (hereafter « INNOVA »). All rights reserved. Protected under the Copyright Act of Canada and international treaties and agreements regarding copyrights. Violators are subject to prosecution and other legal recourses for infringement. Any reproduction, adaptation or other use or disclosure whatsoever, in totality or in part, and in any form or by any means whatsoever, strictly forbidden and requires the prior written approval of INNOVA. All data is the exclusive property of 9105-0732 QUEBEC INC. and under exclusive license to INNOVA and cannot be used nor disclosed in any way either without the prior written approval of INNOVA.

WEIGHT:	TITLE:			
538 Lb	Base for Adjustable Davit Arm			
244 Kg				

COLOR:	Material:	SHEET(S):	PROJET:	Rev.
SAFETY YELLOW	STEEL	2 / 4	A5039-12	03

8 7 6 5 4 3 2 1

SPECIFICATIONS

H This equipment is considered as part of a personal fall arrest system (PFAS) with a maximum working capacity of 164 Kg (360 lb).

It is only to be used in conjunction with a personal fall arrest system that limits the maximum arrest force (MAF) to 6 kN (1,346 lbf).

G Maximum Working Moment: 3,284 N-m (29,064 lbf-in)
Maximum Moment: 32,838 N-m (290,642 lbf-in)

F STANDARDS

Meets the following standards:

- AS/NZS 5532:2013
- ANSI Z359.18.2017
- CSA Z259.15.2017
- OSHA 1926.502
- EN 795:2012 Type A and Type E

E MATERIAL AND CONSTRUCTION

- Base Plate: Steel 50W
- Separator Plate: Steel 50W
- Base tube: Steel HSS A-500
- Level protector: Steel 44W
- Hardware: Steel Zinc and Inox 18-8

Welding Certification : CSA W59 & W47.1, AWS D1.6

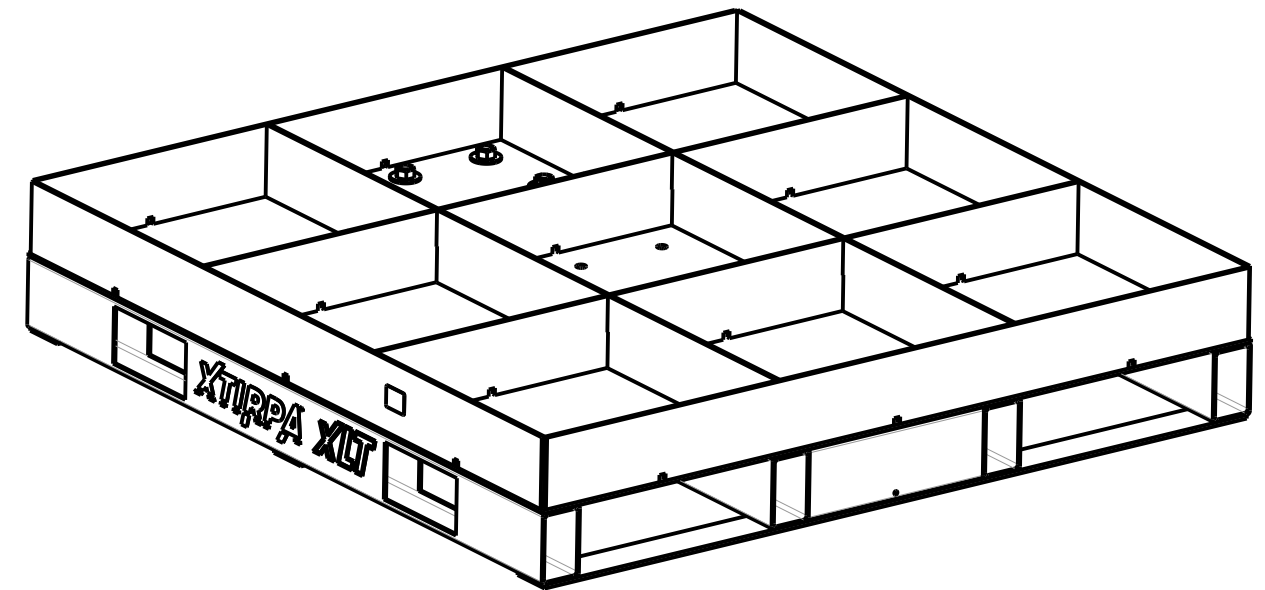
C RESTRICTIONS

This base is to be used only with products approved by Innova Public Utility Products inc.

B Periodic inspections of hardware must be done by competent person. In the occurrence of a fall or the safety of the equipment is in doubt, equipment must be immediately removed from service and inspected by qualified personnel before reuse.

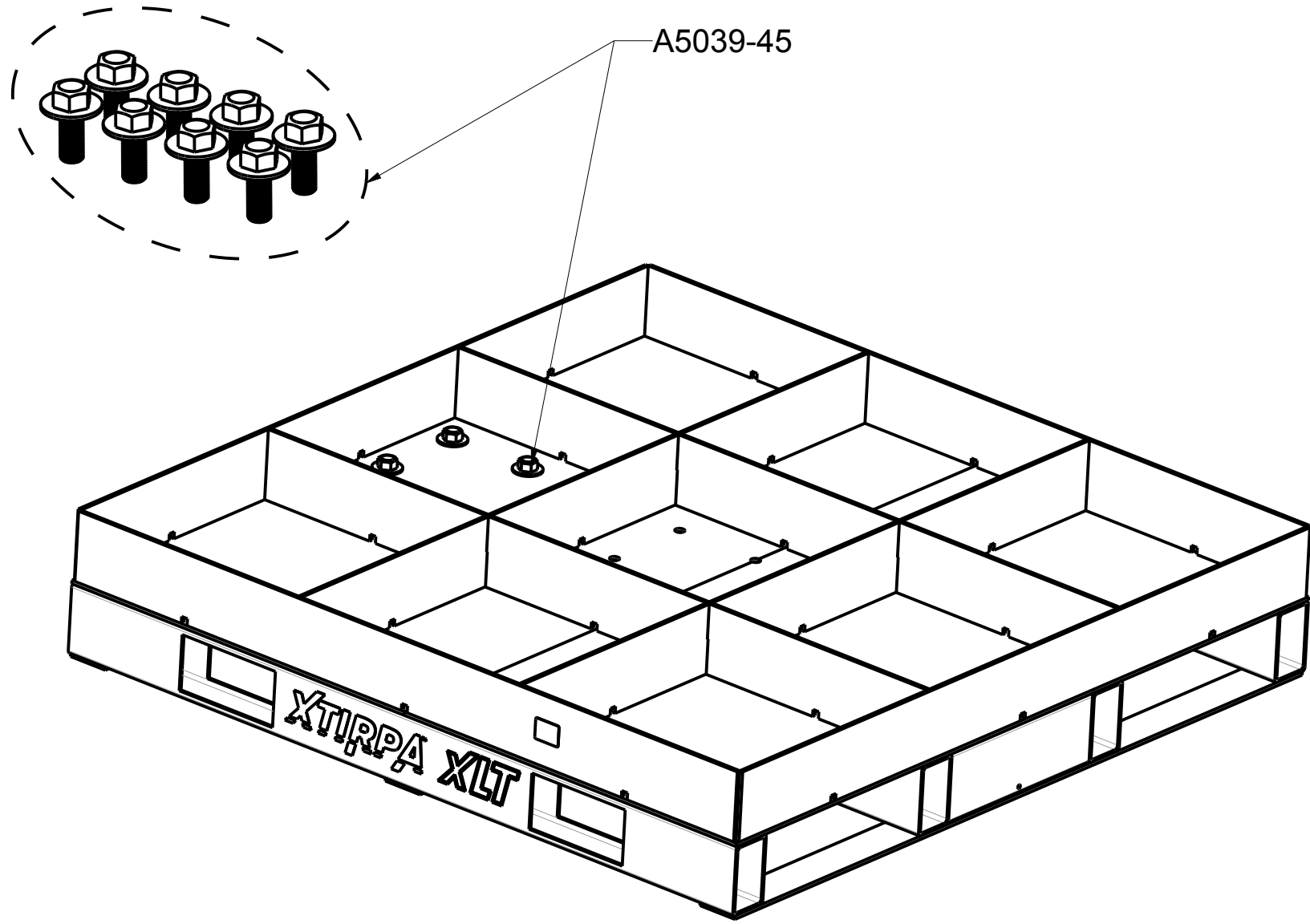
A ** This equipment must always be operated in a level position. This equipment must be inspected by the user before each use and a note must entered in the log book.

Product number: A5039-12



PAT.NO.:				
PRODUITS DE SERVICE PUBLICS INNOVA INC. INNOVA PUBLIC UTILITY PRODUCTS INC.				
© 9105-0732 QUEBEC INC. and under exclusive license to INNOVA PUBLIC UTILITY PRODUCTS INC., (hereafter « INNOVA »). All rights reserved. Protected under the Copyright Act of Canada and international treaties and agreements regarding copyrights. Violators are subject to prosecution and other legal recourses for infringement. Any reproduction, adaptation or other use or disclosure whatsoever, in totality or in part, and in any form or by any means whatsoever, strictly forbidden and requires the prior written approval of INNOVA. All data is the exclusive property of 9105-0732 QUEBEC INC. and under exclusive license to INNOVA and cannot be used nor disclosed in any way either without the prior written approval of INNOVA.				
WEIGHT:	TITLE:			
538 Lb	Base for Adjustable Davit Arm			
244 Kg				
COLOR:	Material:	SHEET(S):	PROJET:	Rev.
SAFETY YELLOW	STEEL	3 / 4	A5039-12	03

Product number: **A5039-12**



PAT.NO.:				
PRODUITS DE SERVICE PUBLICS INNOVA INC. INNOVA PUBLIC UTILITY PRODUCTS INC.				
© 9105-0732 QUEBEC INC. and under exclusive license to INNOVA PUBLIC UTILITY PRODUCTS INC., (hereafter « INNOVA »). All rights reserved. Protected under the Copyright Act of Canada and international treaties and agreements regarding copyrights. Violators are subject to prosecution and other legal recourses for infringement. Any reproduction, adaptation or other use or disclosure whatsoever, in totality or in part, and in any form or by any means whatsoever, strictly forbidden and requires the prior written approval of INNOVA. All data is the exclusive property of 9105-0732 QUEBEC INC. and under exclusive license to INNOVA and cannot be used nor disclosed in any way either without the prior written approval of INNOVA.				
WEIGHT:	TITLE:			
538 Lb	Base for Adjustable Davit Arm			
244 Kg				
COLOR:	Material:	SHEET(S):	PROJET:	Rev.
SAFETY YELLOW	STEEL	4 / 4	A5039-12	03